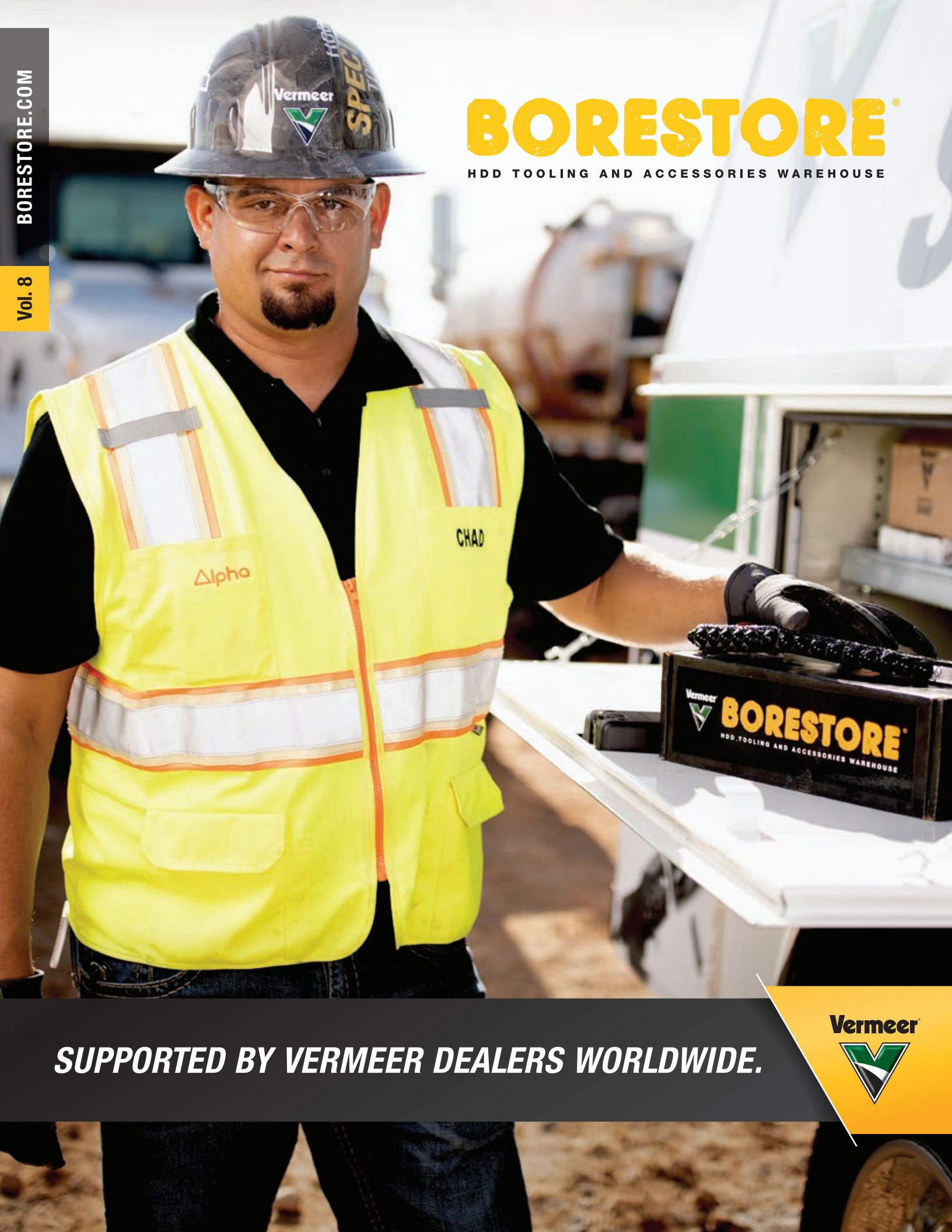


BORESTORE®

HDD TOOLING AND ACCESSORIES WAREHOUSE



SUPPORTED BY VERMEER DEALERS WORLDWIDE.





HAVE TOOLING AND WILL TRAVEL

Whether you're on the job in the middle of a challenging bore, or you're going to be doing a job in unfamiliar ground conditions, Vermeer mobile tooling specialists have your back. These road warriors' offices are on four wheels and loaded up with downhole tooling and accessories for whatever challenging ground conditions you're working in.

Located throughout North America, Vermeer mobile tooling specialists have an acute focus on tooling and will work with you to select the best tooling for ground conditions, drill size and type, as well as other considerations.

Contact your local dealer for more information.

WHEN YOU NEED IT, WHERE YOU NEED IT.

The Vermeer BORESTORE® tooling warehouse is your complete source for HDD tooling and accessories. It's easier than ever to get what you need to get the job done.



Conveniently shop online 24/7 at **BORESTORE.COM**.
Select direct ship or pick up your order yourself.



Call the BORESTORE tooling warehouse at **1-866-VERMEER**,
Monday – Friday, 6 a.m. – 7 p.m. Central Standard Time.



Access local BORESTORE warehouse inventory at Vermeer dealerships worldwide.

HDD tooling to get the job done.

Jobs change. The unexpected occurs. You need tooling now. The Vermeer BORESTORE tooling warehouse accepts orders for overnight shipping up to 7 p.m. Central Standard Time.

TABLE OF CONTENTS

Quick Rig Guide	4
Productivity Tools.....	7
Ditch Witch Compatible Guide	17
Firestick® Drill Rod.....	18
Silver Series Drill Rod	18
QuickFire® Connection System	20
Premium Housing	22
Ace™ Bits	24
Drill Bits	26
Rock Drill Heads.....	28
Armor Drilling System.....	30
Armor Direct System	36
Metallurgy Lab	37
Reamers	38
Adapters and Pulling Eyes	48
Quickshot Swivel Tools	49
Swivels	50
Pullers	52
Breakout Tongs	54
Thread Lube	55

Vermeer Corporation reserves the right to make changes in engineering, design and specifications; add improvements; or discontinue manufacturing at any time without notice or obligation. Equipment shown is for illustrative purposes only and may display optional accessories or components specific to their global region. Please contact your local Vermeer dealer for more information on machine specifications. Vermeer Productivity Tools assist users with planning and management functions. Information provided is reliant upon the accuracy and quality of user-provided data. This document is not a quotation or offer to sell any products in any quantity or at any price. All prices are approximations and are subject to change without notice. All prices are in U.S. Dollars and are exclusive of any and all shipping and handling fees, duties, import fees, taxes, or other similar charges including sales tax, if applicable. Vermeer, the Vermeer logo, Ace, BORESTORE, Firestick and Quickfire are trademarks of Vermeer Manufacturing Company in the U.S. and/or other countries. All other trademarks, registered trademarks and service marks are the property of their respective owners. © 2020 Vermeer Corporation. All Rights Reserved.



QUICK RIG **GUIDE**

Here's your guide for the most popular tooling for your Vermeer horizontal directional drills (HDDs). From drill rod and connection options, to housing, vise jaws and rod wipers, we have you covered.

Can't find what you are looking for in the Quick Rig Guide?

Browse through the rest of the Vermeer BORESTORE warehouse catalog, [BORESTORE.com](https://www.boresstore.com) or call your local dealer for a comprehensive listing of available tooling and accessories.




D6x6 | D7x11 | D7x11A | D8x12
1.32" #200 6' (1.8 M) LONG ROD

PART NO.	PRODUCT	PRICE USD
SUB SAVER		
296276507	FST 1.66" #200 Thread, 8" (20.3 cm) Long	\$122
DRILL ROD OPTION		
222394001	Firestick® Drill Rod 1.32" #200 Thread, 6' (1.8 m) Long	Call Local Dealer
QUICKFIRE CONNECTION SYSTEM		
296364003	Starter Rod QuickFire® Connection System 300 (B) x FST #200 (B)	\$276
296364002	Collar QuickFire System 300 (Hardfaced)	\$143
296364044	Collar QuickFire System 300 (Hardfaced with Teeth)	\$159
296364040	Adapter QuickFire System 300 (P) x 2-4 ACME (P)	\$262
LOW-PROFILE CONNECTIONS		
276261001	Starter Rod 1.625" LPT (B) x FST #200 (B)	\$245
289274001	Collar 1.625" LPT (Hardfaced)	\$88
296343245	Collar 1.625" LPT (Hardfaced with Teeth)	\$158
262392001	Adapter 1.625" LPT (P) x 2-4 ACME (P)	\$162
HOUSING OPTIONS		
296343209	End Load Housing 2" (5.1 cm) OD x FST #200 (B) 8" (20.3 cm) DCI® Mini (Vermeer 5 Bolt Pattern)	\$762
296274010	End Load Housing 2.25" (5.7 cm) OD x FST #200 (B) 15" (38.1 cm) DCI® (Vermeer 5 Bolt Pattern)	\$1,139
296408265	Premium Housing 2.75" (7 cm) OD x 2-4 ACME (B) (Vermeer 6 Bolt Pattern)	\$998
296448877	Direct Connect Housing 2.5" (6.35 cm) OD x FST #200 (B) (Vermeer 5 Bolt Pattern)	\$1,141
296466246	Premium Housing Direct Connect Kit 2.75" (7 cm) OD x FST #200 (B) (Vermeer 6 Bolt Pattern)	\$1,490
WISE JAW		
296271432	Vise Jaw	\$67
ROD WIPER OPTIONS		
235920001	Rod Wiper	\$23
296385050	Rod Wiper - Split (D8x12)	\$57



D7x11 | D7x11A | D7x11A SERIES II | D8x12 | D9x13 SERIES II D9x13 S3 | D10x15 S3
1.66" #200 6' (1.8 M) LONG ROD

PART NO.	PRODUCT	PRICE USD
DRIVE CHUCK		
296255361	FST 1.66" #200 Thread, 10" (25.4 cm) Long (D7x11A)	\$319
SUB SAVER		
296255351	FST 1.66" #200 Thread, 5.83" (14.8 cm) Long (D7x11A)	\$95
296276507	FST 1.66" #200 Thread, 8" (20.3 cm) Long (D7x11A Series II, D8x12, D9x13 Series II, D9x13 S3, D10x15 S3)	\$122
DRILL ROD OPTIONS		
216492001	Firestick Drill Rod 1.66" #200 Thread, 6' (1.8 m) Long	Call Local Dealer
296441778	Silver Series Drill Rod 1.66" #200 Thread, 6' (1.8 m) Long	Call Local Dealer
QUICKFIRE CONNECTION SYSTEM		
296364003	Starter Rod QuickFire System 300 (B) x FST #200 (B)	\$276
296364002	Collar QuickFire System 300 (Hardfaced)	\$143
296364044	Collar QuickFire System 300 (Hardfaced with Teeth)	\$159
296364040	Adapter QuickFire System 300 (P) x 2-4 ACME (P)	\$262
LOW-PROFILE CONNECTIONS		
276261001	Starter Rod 1.625" LPT (B) x FST #200 (B)	\$245
289274001	Collar 1.625" LPT (Hardfaced)	\$88
296343245	Collar 1.625" LPT (Hardfaced with Teeth)	\$158
262392001	Adapter 1.625" LPT (P) x 2-4 ACME (P)	\$162
HOUSING OPTIONS		
296343209	End Load Housing 2" (5.1 cm) OD x FST #200 (B) 8" (20.3 cm) DCI® Mini (Vermeer 5 Bolt Pattern)	\$762
296274010	End Load Housing 2.25" (5.7 cm) OD x FST #200 (B) 15" (38.1 cm) DCI® (Vermeer 5 Bolt Pattern)	\$1,139
296408265	Premium Housing 2.75" (7 cm) OD x 2-4 ACME (B) (Vermeer 6 Bolt Pattern)	\$998
296448877	Direct Connect Housing 2.5" (6.35 cm) OD x FST #200 (B) (Vermeer 5 Bolt Pattern)	\$1,141
296466246	Premium Housing Direct Connect Kit 2.75" (7 cm) OD x FST #200 (B) (Vermeer 6 Bolt Pattern)	\$1,490
WISE JAW		
236076001	Vise Jaw Stationary Side	\$58
236090001	Vise Jaw Cylinder Side	\$94
ROD WIPER OPTIONS		
235921001	Rod Wiper	\$30
296294590	Rod Wiper - Split	\$60



EFFICIENCY ON THE JOB WITH **VERMEER** PRODUCTIVITY TOOLS

On the drill or at the office, Vermeer productivity tools make it easy to access information about your HDD machines and projects.

Find your jobsite solution by visiting store.vermeer.com.

Talk to your local Vermeer
dealer to learn more.



D16x20 | D16x20A | D16x20 Series II | D18x22 | D20x22 | D20x22 S3
1.9" #250 10' (3 M) LONG ROD

PART NO.	PRODUCT	PRICE USD
DRIVE CHUCK		
296255364	FST 1.9" #250 Thread, 11" (27.9 cm) Long	\$356
SUB SAVER		
296255352	FST 1.9" #250 Thread, 4" (10.2 cm) Long (D16x20, D16x20A, D18x22, D20x22)	\$95
296291966	FST 1.9" #250 Thread, 10.14" (25.8 cm) Long (D16x20 Series II, D20x22 S3)	\$197
DRILL ROD OPTIONS		
230993001	Firestick Drill Rod 1.9" #250 Thread, 10' (3.1 m) Long	Call Local Dealer
296441777	Silver Series Drill Rod 1.9" #250 Thread, 10' (3.1 m) Long	Call Local Dealer
QUICKFIRE CONNECT SYSTEM		
296331952	Starter Rod QuickFire System 400 (B) x FST #250 (B)	\$307
296331995	Collar QuickFire System 400 (Hardfaced)	\$143
296364043	Collar QuickFire System 400 (Hardfaced with Teeth)	\$160
296364037	Adapter QuickFire System 400 (P) x 2.375" API Reg (P)	\$300
296383294	Adapter QuickFire System 400 (P) x 8-UNC (P)	\$300
LOW-PROFILE CONNECTIONS		
234840001	Starter Rod 2.125" LPT (B) x FST #250 (B)	\$255
289273001	Collar 2.125" LPT (Hardfaced)	\$133
296343244	Collar 2.125" LPT (Hardfaced with Teeth)	\$181
296279067	Adapter 2.125" LPT (P) x 2.375" API Reg (P)	\$259
296472533	Adapter 2.125" LPT (P) x 8-UNC (P)	\$388
HOUSING OPTIONS		
296408264	Premium Housing 3" (7.6 cm) OD x 2.375" API Reg (B) (Vermeer 6 Bolt Pattern)	\$1,103
296466151	Small Armor® Drilling System Housing 3.25" (8.3 cm) OD x 2.375" API Reg (B)	\$2,443
296351780	Universal Housing 3" (7.6 cm) OD x 8-UNC (BxB) 23.9 GPM (90.5 L/min)	\$1,974
WISE JAW		
236111001	Vise Jaw Stationary Side	\$58
236112001	Vise Jaw Cylinder Side	\$89
250272001	Vise Jaw Cylinder Side with Centering Plate	\$101
ROD WIPER OPTIONS		
235922001	Rod Wiper	\$30
296294594	Rod Wiper - Split	\$60



D18x22 | D20x22 | D20x22 Series II | D20x22 S3 | D23x30 S3
2.06" #400 10' (3 M) LONG ROD

PART NO.	PRODUCT	PRICE USD
DRIVE CHUCK		
296279709	FST 2.06" #400 Thread, 11" (27.9 cm) Long (D18x22, D20x22)	\$453
SUB SAVER		
296279708	FST 2.06" #400 Thread, 6.5" (16.5 cm) Long (D18x22, D20x22)	\$133
296281195	FST 2.06" #400 Thread, 10.14" (25.8 cm) Long (D20x22 Series II, D20x22 S3, D23x30 S3)	\$197
DRILL ROD OPTIONS		
221628001	Firestick Drill Rod 2.06" #400 Thread, 10' (3.1 m) Long	Call Local Dealer
296441776	Silver Series Drill Rod 2.06" #400 Thread, 10' (3.1 m) Long	Call Local Dealer
QUICKFIRE CONNECTION SYSTEM		
296331926	Starter Rod QuickFire System 400 (B) x FST #400 (B)	\$307
296331995	Collar QuickFire System 400 (Hardfaced)	\$143
296364043	Collar QuickFire System 400 (Hardfaced with Teeth)	\$160
296364037	Adapter QuickFire System 400 (P) x 2.375" (6 cm) API Reg (P)	\$300
296383294	Adapter QuickFire System 400 (P) x 8-UNC (P)	\$300
LOW-PROFILE CONNECTIONS		
250658001	Starter Rod 2.125" LPT (B) x FST #400 (B)	\$255
289273001	Collar 2.125" LPT (Hardfaced)	\$133
296343244	Collar 2.125" LPT (Hardfaced with Teeth)	\$181
296279067	Adapter 2.125" LPT (P) x 2.375" API Reg (P)	\$259
296472533	Adapter 2.125" LPT (P) x 8-UNC (P)	\$388
HOUSING OPTIONS		
296408264	Premium Housing 3" (7.6 cm) OD x 2.375" API Reg (B) (Vermeer 6 Bolt Pattern)	\$1,103
296466151	Small Armor Drilling System Housing 3.25" (8.3 cm) OD x 2.325" API Reg (B)	\$2,443
296351780	Universal Housing 3" (7.6 cm) OD x 8-UNC (BxB) 23.9 GPM (90.5 L/min)	\$1,974
WISE JAW		
296279701	Vise Jaw 2.06" (5.2 cm) Stationary Side	\$57
296279704	Vise Jaw 2.06" (5.2 cm) Cylinder Side	\$84
ROD WIPER OPTIONS		
235923001	Rod Wiper 2.06" (5.2 cm)	\$30
296294598	Rod Wiper - Split 2.06" (5.2 cm)	\$60

For drill bit options, talk to your local Vermeer dealer to find the best fit for your next project or see pages 23-27.



D23x30 S3 | D24x40 | D24x40A | D24x40 Series II | D24x40 S3 | D40x40 2.375" #600 10' (3 M) LONG ROD

PART NO.	PRODUCT	PRICE USD
DRIVE CHUCK		
230980001	FST 2.375" #600 Thread, 12" (30.5 cm) Long (D24x40A SN 001-382)	\$602
249169001	FST 2.375" #600 Thread, 13.5" (34.3 cm) Long (D24x40A SN 383-Above)	\$571
296273550	FST 2.375" #600 Thread, 16" (40.6 cm) Long (D24x40 Series II)	\$626
296443778	FST 2.375" #600 Thread, 16.5" (41.9 cm) Long (D24x40 S3)	\$627
244493001	FST 2.375" #600 Thread, 15" (38.1 cm) Long (D40x40)	\$716
SUB SAVER		
296443760	FST 2.375" #600 Thread, 10.14" (25.8 cm) Long (D23x30 S3)	\$235
230945001	FST 2.375" #600 Thread, 5.5" (14 cm) Long (D24x40A SN 001-382)	\$152
249166001	FST 2.375" #600 Thread, 7" (17.8 cm) Long (D24x40A SN 383-Above)	\$152
276323001	FST 2.375" #600 Thread, 9.5" (24.1 cm) Long (D24x40 Series II)	\$176
296443760	FST 2.375" #600 Thread, 10" (25.4 cm) Long (D24x40 S3)	\$235
244492001	FST 2.375" #600 Thread, 8.5" (21.59 cm) Long (D40x40)	\$217
DRILL ROD OPTIONS		
222276001	Firestick Drill Rod 2.375" #600 Thread, 10' (3.1 m) Long (D23x30 S3-D24x40 S3)	Call Local Dealer
222455001	Firestick Drill Rod 2.375" #600 Thread, 15' (4.6 m) Long (D40x40)	Call Local Dealer
296441775	Silver Series Drill Rod 2.375" #600 Thread, 10' (3.1 m) Long (D23x30 S3-D24x40 S3)	Call Local Dealer
QUICKFIRE CONNECTION SYSTEM		
296331924	Starter Rod QuickFire System 400 (B) x FST #600 (B)	\$307
296364069	Starter Rod QuickFire System 460 (B) x FST #600 (B)	\$539
296331995	Collar QuickFire System 400 (Hardfaced)	\$143
296364043	Collar QuickFire System 400 (Hardfaced with Teeth)	\$160
296331990	Collar QuickFire System 460 (Hardfaced)	\$169
296364042	Collar QuickFire System 460 (Hardfaced with Teeth)	\$190
296364037	Adapter QuickFire System 400 (P) x 2.375" API Reg (P)	\$300
296364038	Adapter QuickFire System 400 (P) x 2.875" API Reg (P)	\$311
296383294	Adapter QuickFire System 400 (P) x 8-UNC (P)	\$300
296364013	Adapter QuickFire System 460 (P) x 2.375" API Reg (P)	\$336
296364014	Adapter QuickFire System 460 (P) x 2.875" API Reg (P)	\$388
LOW-PROFILE CONNECTIONS		
234826001	Starter Rod 2.125" LPT (B) x FST #600 (B)	\$261
289273001	Collar 2.125" LPT (Hardfaced)	\$133
296343244	Collar 2.125" LPT (Hardfaced with Teeth)	\$181
296279067	Adapter 2.125" LPT (P) x 2.375" (6 cm) API Reg (P)	\$259
289406001	Adapter 2.125" LPT (P) x 2.875" (7.3 cm) API Reg (P)	\$388
296472533	Adapter 2.125" LPT (P) x 8-UNC (P)	\$388
HOUSING OPTIONS		
296408264	Premium Housing 3" (7.6 cm) OD x 2.375" API Reg (B) (Vermeer 6 Bolt Pattern)	\$1,103
296406540	Premium Housing 3.25" (8.3 cm) OD x 2.375" API Reg (B) (Vermeer 6 Bolt Pattern)	\$1,156
296466243	Premium Housing Direct Connect Kit 3" (7.6 cm) OD x FST #600 (B) (Vermeer 6 Bolt Pattern)	\$1,740
296466151	Small Armor System Housing 3.25" (8.3 cm) OD x 2.325" API Reg (B)	\$2,443
296466152	Medium Armor System Housing 3.75" (9.5 cm) OD x 2.875" API Reg (B)	\$3,559
296351780	Universal Housing 3" (7.6 cm) OD x 8-UNC (BxB)	\$1,974
296351765	Universal Housing 3.5" (8.9 cm) OD x 2.375" API Reg (BxB)	\$2,534
WISE JAW		
296400226	Vise Jaw (D23x30 S3)	\$51
230831001	Vise Jaw (D24x40A-D24x40 S3)	\$64
285750001	Vise Block with Insert (D40x40)	\$285
278223001	Vise Insert for 285750001	\$19
ROD WIPER OPTIONS		
235924001	Rod Wiper (D24x40-D40x40)	\$30
296294602	Rod Wiper - Split (D23x30 S3-D40x40)	\$60

D23x30_{DR} S3

PART NO.	PRODUCT	PRICE USD
SUB SAVER		
296522920	Outer Sub Saver	\$510
296487423	Threaded Inner Sub Saver	\$175
296522905	Inner Sub Saver Slide Coupler	\$115
296487425	Inner Sub Saver Hex	\$71
296522817	Roll Pin (2 required)	\$0.91
296522818	Spring	\$13
DRILL ROD		
296522826	Outer Rod - Firestick Drill Rod 2.375" #625 10' (3.1 m) Long	Call Local Dealer
296522825	Inner Hex Rod	Call Local Dealer
296522884	Inner Rod Hex Coupler	\$100
296544123	Retention Pin Dowel (2 required)	\$1.98
DRILL HEAD		
296490378	RH10 Drill Head 15" (38.1 cm) Sonde, 2.875" API Reg Bit Box	\$6,426
296537909	RH10 50 Hour Rebuild Kit	\$1,010
296537911	RH10 200 Hour Rebuild Kit	\$3,366
296514826	RH10 Drill Head Rebuild Tool Kit	\$1,850
296521054	PG5 Quick Pullback Grapple for Tricone Bits	\$255
101562004	Vermeer Polyurea Grease (10-pack)	\$82
ADAPTERS		
296539674	2.375" FST #625 (P) x 24k Pull Eye with Fluid Ports	\$306
296522913	2.375" FST #625 (P) x 24k Pull Eye with Fluid Ports and Teeth	\$357
296522850	2.375" FST #625 (P) x 2.375" API Reg (P)	\$306
296522848	2.375" FST #625 (P) x 2.875" API Reg (P)	\$357
296522852	2.375" FST #625 (P) x 3.5" API Reg (P)	\$383
296539673	2.375" FST #625 (P) x 2.375" FST #600 (P)	\$357
296539678	2.375" FST #625 (P) x QuickFire System 400 (B) Starter Rod	\$459
WISE JAW		
296486847	Vise Jaw	\$107
ROD WIPER		
296294602	Rod Wiper - Split	\$60

D33x44 | D36x50 | D36x50 Series II | D40x55 S3 2.375" #650 10' (3 M) OR 15' (4.6 M) LONG ROD

PART NO.	PRODUCT	PRICE USD
DRIVE CHUCK		
296309648	FST 2.375" #650 Thread, 14.42" (36.6 cm) (D33x44, D36x50, D36x50 Series II)	\$669
296443819	FST 2.375" #650 Thread, 15.42" (39.2 cm) (D40x55 S3)	\$656
SUB SAVER		
296309650	FST 2.375" #650 Thread, 7.92" (20.1 cm) Long (D33x44, D36x50, D36x50 Series II)	\$218
296443818	FST 2.375" #650 Thread, 8.92" (22.7 cm) Long (D40x55 S3)	\$246
DRILL ROD OPTIONS		
296309599	Firestick Drill Rod 2.375" #650 Thread, 10' (3.1 m) Long (D33x44, D36x50, D36x50 Series II, D40x55 S3)	Call Local Dealer
296312531	Firestick Drill Rod 2.375" #650 Thread, 15' (4.6 m) Long (D33x44, D36x50, D36x50 Series II)	Call Local Dealer
QUICKFIRE CONNECTION SYSTEM		
296331978	Starter Rod QuickFire System 460 (B) x FST #650 (B)	\$544
296415321	Starter Rod QuickFire System 460 (B) x FST #650 (B) with Check Valve	\$686
296331990	Collar QuickFire System 460 (Hardfaced)	\$169
296364042	Collar QuickFire System 460 (Hardfaced with Teeth)	\$190
296364013	Adapter QuickFire System 460 (P) x 2.375" API Reg (P)	\$336
296364014	Adapter QuickFire System 460 (P) x 2.875" API Reg (P)	\$388
HOUSING OPTIONS		
296406540	Premium Housing 3.25" (8.3 cm) OD x 2.375" API Reg (B) (Vermeer 6 Bolt Pattern)	\$1,156
296466238	Premium Housing Direct Connect Kit 3.25" (8.3 cm) OD x FST #650 (B) (Vermeer 6 Bolt Pattern)	\$1,721
296466152	Medium Armor System Housing 3.75" (9.5 cm) OD x 2.875" API Reg (B)	\$3,559
296351765	Universal Housing 3.5" (8.9 cm) OD x 2.375" API Reg (BxB) 61.3 GPM (232.1 L/min)	\$2,534
WISE JAW		
276415001	Vise Jaw 2.375" (6 cm)	\$57
ROD WIPER OPTIONS		
235924001	Rod Wiper	\$30
296294602	Rod Wiper - Split	\$60

D40x55_{DR} S3

PART NO.	PRODUCT	PRICE USD
SUB SAVER		
296472053	Outer Sub Saver	\$536
296456692	Threaded Inner Sub Saver	\$400
296456600	Inner Sub Saver Slide Coupler	\$245
296456601	Inner Sub Saver Hex	\$78
296456618	Spring	\$20
296456627	Roll Pin (4 required)	\$1.23
DRILL ROD		
296456678	Outer Rod - Firestick Drill Rod 2.625" #750 10' (3.1 m) Long	Call Local Dealer
296456677	Inner Hex Rod	Call Local Dealer
296487375	Rod Coupler	\$169
296456627	Roll Pin (2 required)	\$1.23
DRILL HEAD		
296479658	RH15 Drill Head 15" (38.1 cm) Sonde, 3.5" API Bit Box	\$7,603
296490296	RH15 Drill Head 19" (48.3 cm) Sonde, 3.5" API Bit Box	\$7,814
296490302	RH15 50 Hour Rebuild Kit	\$1,056
296490303	RH15 200 Hour Rebuild Kit - 15" (38.1 cm) Sonde (For 296479658)	\$3,519
296490305	RH15 200 Hour Rebuild Kit - 19" (48.3 cm) Sonde (For 296490296)	\$3,650
296479732	RH15 Drill Head Rebuild Tool Kit	\$1,913
296514927	PG6 Quick Pullback Grapple for Tricone Bits	\$255
101562004	Vermeer Polyurea Grease (10-pack)	\$82
ADAPTERS		
296482803	2.625" (6.6 cm) FST #750 (P) x 24k Pull Eye with Fluid Ports	\$385
296482840	2.625" (6.6 cm) FST #750 (P) x 24k Pull Eye with Fluid Ports and Teeth	\$470
296487452	2.625" (6.6 cm) FST #750 (P) x 50k Pull Eye	\$440
296487461	2.625" (6.6 cm) FST #750 (P) x 50k Pull Eye with Teeth	\$512
296487454	2.625" (6.6 cm) FST #750 (P) x 2.375" API Reg (P)	\$388
296487456	2.625" (6.6 cm) FST #750 (P) x 2.875" API Reg (P)	\$409
296487458	2.625" (6.6 cm) FST #750 (P) x 3.5" API Reg (P)	\$440
296487472	2.625" (6.6 cm) FST #750 (P) x 2.625" FST #750 (P)	\$311
296456621	2.625" (6.6 cm) FST #750 (P) x QuickFire 460 (B) Starter Rod	\$549
WISE JAW		
296486831	Vise Jaw	\$103
ROD WIPER		
296294606	Rod Wiper - Split	\$63

D36x50 | D36x50 Series II | D40x55 S3 2.625" #700 10' (3 M) OR 15' (4.6M) LONG ROD

PART NO.	PRODUCT	PRICE USD
DRIVE CHUCK		
296309505	FST 2.625" #700 Thread, 15.5" (39.4 cm) Long (D36x50, D36x50 Series II)	\$737
296443822	FST 2.625" #700 Thread, 14.5" (36.8 cm) Long (D40x55 S3)	\$723
SUB SAVER		
296309507	FST 2.625" #700 Thread, 8.5" (21.6 cm) Long (D36x50, D36x50 Series II)	\$282
296443821	FST 2.625" #700 Thread, 9.5" (24.1 cm) Long (D40x55 S3)	\$288
DRILL ROD OPTIONS		
296309521	Firestick Drill Rod 2.625" #700 Thread, 10' (3.1 m) Long	Call Local Dealer
296309522	Firestick Drill Rod 2.625" #700 Thread, 15' (4.6 m) Long	Call Local Dealer
QUICKFIRE CONNECTION SYSTEM		
296331962	Starter Rod QuickFire System 460 (B) x FST #700 (B)	\$539
296331990	Collar QuickFire System 460 (Hardfaced)	\$169
296364042	Collar QuickFire System 460 (Hardfaced with Teeth)	\$190
296364013	Adapter QuickFire System 460 (P) x 2.375" API Reg (P)	\$336
296364014	Adapter QuickFire System 460 (P) x 2.875" API Reg (P)	\$388
HOUSING OPTIONS		
296406540	Premium Housing 3.25" (8.3 cm) OD x 2.375" API Reg (B) (Vermeer 6 Bolt Pattern)	\$1,156
296466239	Premium Housing Direct Connect Kit 3.25" (8.3 cm) OD x FST #700 (B) (Vermeer 6 Bolt Pattern)	\$1,721
296466152	Medium Armor System Housing 3.75" (9.5 cm) OD x 2.875" API Reg (B)	\$3,559
296351765	Universal Housing 3.5" (8.9 cm) OD x 2.375" API Reg (BxB) 61.3 GPM (232.1 L/min)	\$2,534
WISE JAW		
296310768	Vise Jaw	\$58
ROD WIPER OPTIONS		
296294606	Rod Wiper - Split	\$63



D50x100A | D60x90 | D60x90 S3 | D80x100 2.875" #900 15' (4.6M) LONG ROD

PART NO.	PRODUCT	PRICE USD
DRIVE CHUCK		
296255366	FST 2.875" #900 Thread, 13.5" (34.3 cm) Long (D50x100A)	\$1,333
296357202	FST 2.875" #900 Thread, 19.7" (50.1 cm) Long (D60x90, D60x90 S3)	\$1,333
296357222	FST 2.875" #900 Thread, 19.7" (50.1 cm) Long (Wireline) (D60x90, D60x90 S3)	\$1,986
SUB SAVER		
296255354	FST 2.875" #900 Thread, 5.82" (14.8 cm) (For Drive Chuck 296255366)	\$400
296344115	FST 2.875" #900 Thread, 8.7" (22.09 cm) (For Drive Chucks 296357202, 296257222)	\$480
DRILL ROD OPTION		
222452001	Firestick Drill Rod 2.875" #900 Thread, 15' (4.6 m) Long	Call Local Dealer
ADAPTERS		
296337363	Adapter 2.875" API Reg (P) x 2.875" FST #900 (B)	\$388
296341593	Adapter 2.875" API IF (P) x 2.875" FST #900 (B)	\$388
HOUSING OPTIONS		
296408266	Premium Housing 3.5" (8.9 cm) OD x 2.875" API Reg (B) Vermeer 6 Bolt Pattern 5/8" (1.6 cm) Bolts	\$1,576
296466153	Large Armor System Housing 4.25" (10.8 cm) OD x 2.875" API IF (B)	\$4,484
296351766	Universal Housing 3.75" (9.53 cm) OD x 2.875" API Reg (BxB) 95.7 GPM (362.3 L/min)	\$2,640
WISE JAW		
249879001	Vise Jaw (D50x100A, D80x100)	\$140
222488001	Vise Insert for Part No. 249879001 (D50x100A, D80x100)	\$20
296443024	Vise Block Insert Cylinder Side (D60x90, D60x90 S3)	\$203
296350898	Vise Block Insert Stationary Side (D60x90, D60x90 S3)	\$143
ROD WIPER OPTIONS		
235925001	Rod Wiper	\$23
296294610	Rod Wiper - Split	\$63

D50x100 | D50x100A | D60x90 | D60x90 S3 D80x100 | D80x100 Series II 3.5" #800 15' (4.6M) LONG ROD

PART NO.	PRODUCT	PRICE USD
DRIVE CHUCK		
296255475	FST 3.5" #800 Thread, 16.46" (41.8 cm) Long (D50x100, D50x100A, D60x90, D60x90 S3, D80x100 Series II)	\$1,365
222431001	FST 3.5" #800 Thread, 13" (33.02 cm) Long (D80x100)	\$1,265
296268953	FST 3.5" #800 Thread, 16.49" (41.89 cm) Long (Wireline) (D80x100 Series II)	\$1,949
SUB SAVER		
296255477	FST 3.5" #800 Thread, 7.02" (17.8 cm) Long (D50x100, D50x100A, D60x90, D60x90 S3, D80x100, D80x100 Series II)	\$375
DRILL ROD OPTION		
222454001	Firestick Drill Rod 3.5" #800 Thread, 15' (4.6 m) Long	Call Local Dealer
ADAPTERS		
296257929	Adapter 2.875" API Reg (P) x 3.5" FST #800 (B)	\$362
296312650	Adapter 2.875" API IF (P) x 2.875" FST #800 (B)	\$388
HOUSING OPTIONS		
296408266	Premium Housing 3.5" (8.9 cm) OD x 2.875" API Reg (B) Vermeer 6 Bolt Pattern 5/8" (1.6 cm) Bolts	\$1,576
296466153	Large Armor System Housing 4.25" (10.8 cm) OD x 2.875" API IF (B)	\$4,484
296351766	Universal Housing 3.75" (9.53 cm) OD x 2.875" API Reg (BxB) 95.7 GPM (362.3 L/min)	\$2,640
WISE JAW		
296443140	Vise Block Cylinder Side (D60x90, D60x90 S3)	\$227
296369679	Vise Block Stationary Side (D60x90, D60x90 S3)	\$88
296285731	Vise Block D80x100 Series II (SN 101-436)	\$129
296303056	Vise Block D80x100 Series II (SN 437)	\$204
296303218	Vise Insert - Diamond Pattern (For Part No. 296303056)	\$13
249880001	Vise Jaw (D50x100A, D80x100)	\$155
285754001	Vise Block with Insert (D50x100A, D80x100)	\$241
278121001	Vise Insert (For Part No. 285754001 and 296285731) (D50x100A, D80x100)	\$14
ROD WIPER OPTIONS		
235926001	Rod Wiper	\$29
296294614	Rod Wiper - Split	\$62

D100x120 | D100x120 Series II | D100x140 | D100x140 S3 3.5" #1000 15' (4.6M) OR 20' (6.1M) LONG ROD

PART NO.	PRODUCT	PRICE USD
DRIVE CHUCK		
296309516	FST 3.5" #1000 Thread, 16.24" (41.3 cm) Long	\$1,412
296309602	FST 3.5" #1000 Thread, 16.24" (41.3 cm) Long (Wireline)	\$1,986
SUB SAVER		
296309515	FST 3.5" #1000 Thread, 7.02" (17.8 cm) Long	\$375
DRILL ROD OPTIONS		
296337977	Firestick Drill Rod 3.5" (8.9 cm) #1000 Thread, 15' (4.6 m) Long (D100x140, D100x140 S3)	Call Local Dealer
296309520	Firestick Drill Rod 3.5" (8.9 cm) #1000 Thread, 20' (6.1 m) Long	Call Local Dealer
ADAPTERS		
296312588	Adapter 3.5" API Reg (P) x 3.5" (8.9 cm) FST #1000 (B)	\$414
296312616	Adapter 2.875" API IF (P) x 2.875" (7.3 cm) FST #1000 (B)	\$388
HOUSING OPTIONS		
296408267	Premium Housing 4.5" (11.4 cm) OD x 3.5" API Reg (B) Vermeer 6 Bolt Pattern 3/4" (1.9 cm) Bolts	\$2,102
296466153	Large Armor System Housing 4.25" (10.8 cm) OD x 2.875" API IF (B)	\$4,484
296351767	Universal Housing 4.5" (11.5 cm) OD x 3.5" API Reg (BxB) 187.6 GPM (710.1 L/min)	\$2,744
WISE JAW		
296303056	Vise Block 3.5" (D100x120 Series II, D100x140, D100x140 S3)	\$204
296303218	Vise Insert - Diamond Pattern 3.5" (For Part No. 296303056) (D100x120 Series II, D100x140, D100x140 S3)	\$13
ROD WIPER OPTIONS		
235926001	Rod Wiper	\$29
296294614	Rod Wiper - Split	\$62

DITCH WITCH COMPATIBLE GUIDE

BORESTORE warehouse makes it easy to utilize our most popular tooling technologies on your Ditch Witch HDD.



Connections

Running Ditch Witch drill rod? BORESTORE warehouse can cut non-proprietary thread profiles, so we can convert you to the QuickFire® connection system.

Housings

Running SubSite electronics? Our Premium and Armor system housings are available in SubSite electronics-compatible versions.

Own some Ditch Witch pattern bits? Select Premium housings feature both Vermeer 6-bolt and Ditch Witch 6-bolt configurations on a single housing, helping you maximize usage of your bit fleet.



Bits

Have some life left on your current Ditch Witch housing? We offer our high-end Ace™ and Gladiator bit families in Ditch Witch 5-bolt and 6-bolt configurations, offering compatibility with your current housing.



Let your local Vermeer dealer know the drill model you're running, and they can show you a variety of options to help meet your needs.

PERSONALIZED TRAINING OPPORTUNITIES TAILORED FOR YOUR CREW

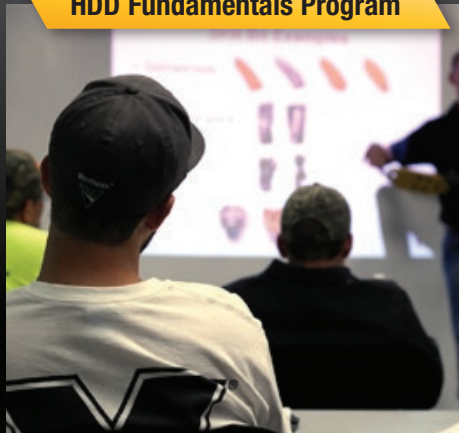
No matter the goal, Vermeer offers training opportunities to meet the unique needs of your crew. From one- and two-week options at Vermeer headquarters in Pella, Iowa, to new specialized courses offered by local Vermeer dealers.

HDD Circuit® Training Program



Certified in-class and hands-on training programs for trenchless installation careers that are hosted in Pella, Iowa, in a small group setting.

HDD Fundamentals Program



Instructor-led classroom training that teaches the fundamentals of horizontal directional drilling and hosted by your local Vermeer dealership team.

Vermeer HDD Simulator



A virtual reality-based training interaction that gets you on a drill before you step on a jobsite.

REGISTER TODAY

[VERMEER.COM](https://www.vermeer.com)

Vermeer Corporation reserves the right to make changes in engineering, design and specifications; add improvements; or discontinue manufacturing at any time without notice or obligation. Equipment shown is for illustrative purposes only and may display optional accessories or components specific to their global region. Please contact your local Vermeer dealer for more information on machine specifications. Vermeer, the Vermeer logo and HDD Circuit are trademarks of Vermeer Manufacturing Company in the U.S. and/or other countries. © 2020 Vermeer Corporation. All Rights Reserved.





FIRESTICK®

THE SUPERIOR DRILL ROD.

High standards. High expectations. Proven results.

When Vermeer developed Firestick drill rod, it invigorated the industry. Firestick drill rod meets the high standards of quality, durability and reliability.

Quality steel. Reliable construction. Precise tolerances. These are the qualities that describe the industry-leading Vermeer Firestick drill rod. Each rod carries a batch number for traceability. Designed with a coarse and tapered thread profile for quick makeup.

The durability and performance of your drill rod is vital to your operation. See why this Vermeer original sets the industry standard.



SILVER SERIES

NOT EVERY HDD JOB IS CREATED EQUAL.

When straightforward, less-aggressive projects require a budget-conscious option, there's the new Silver Series drill rod. Comprised of one-piece forged, S135 grade steel, and threaded in the same U.S. state-of-the-art facility as Firestick drill rod, it is designed for moderate steering applications.

The durability and performance of your drill rod is vital to your operation. Together, Firestick drill rod and Silver Series drill rod provide a trusted option for your project.



DID YOU KNOW?

Applying Vermeer thread lock epoxy will help maintain proper torque and thread engagement of your sub saver.

VERMEER DRILL ROD USAGE GUIDE: FIRESTICK® OR SILVER SERIES DRILL ROD?

Which Navigator® HDD do you operate?



D6x6



D7x11 – D10x15 S3



D16x20 – D20x22 S3



D18x22 – D24x26



D23x30 S3 – D24x40 S3



D36x50 –
D100x140 S3

Silver Series drill rod is comprised of S135 steel with a yield stress of 135,000 psi (930,792 kPa). That makes the recommended average steer 8 percent per rod compared to 10 percent per rod with Firestick drill rod.

What level of steerability do you require with your bores?

AGGRESSIVE

MODERATE

LOW

Experienced operators know that over-steering can leave you with permanently bent or broken rods.

What degree of difficulty are your bores?

HIGH

AVERAGE

LOW

Is short-term cost minimization more important than longer-term performance?

Contact your local Vermeer dealer for market competitive pricing.*

NO

YES



Firestick drill rod



Silver Series drill rod

*Pricing may vary. Available at participating North American Vermeer dealers only.

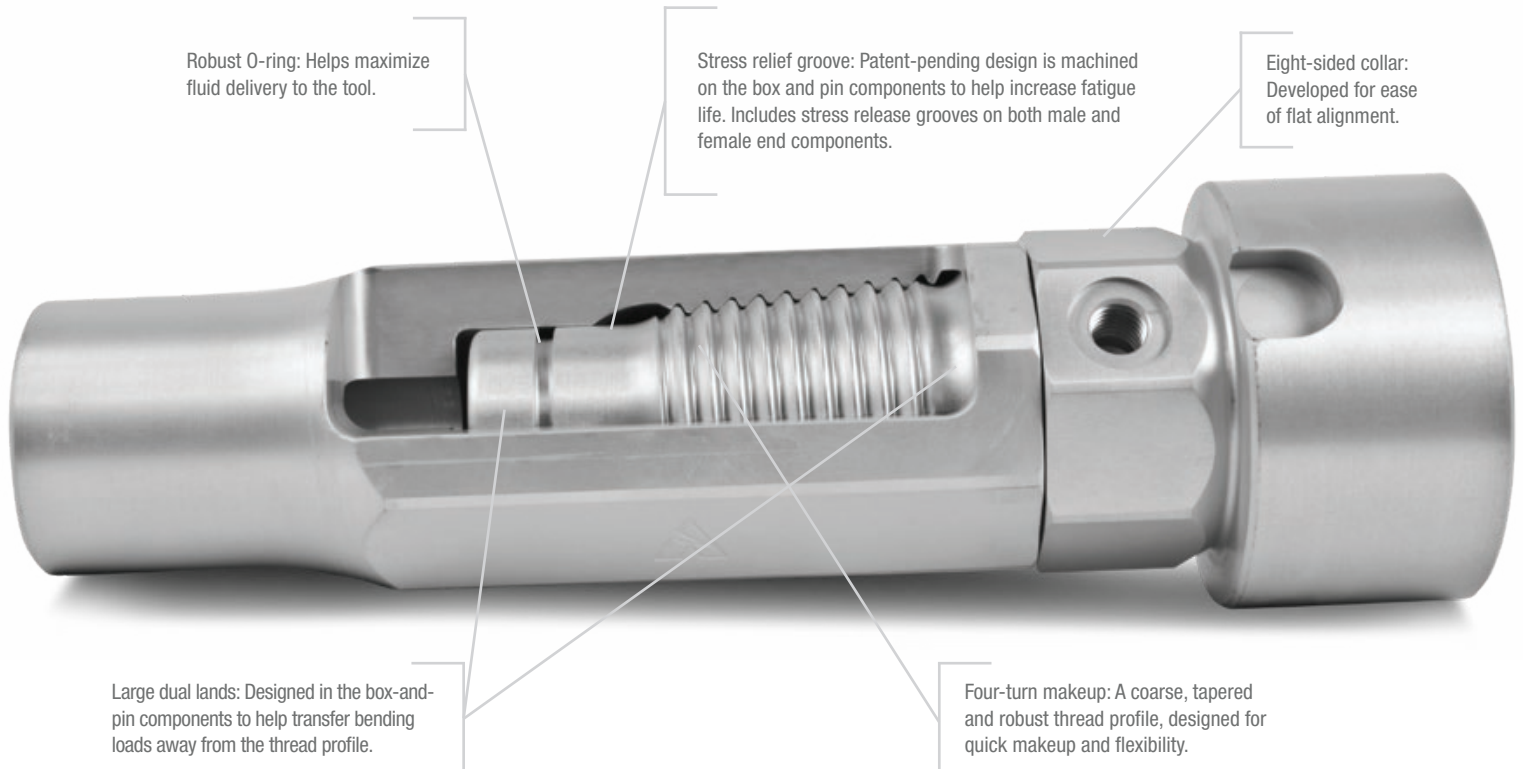
QUICKFIRE®

The QuickFire connection system is a Vermeer-original design born from the same innovation that created our industry-leading Firestick drill rod. The QuickFire connection is manufactured from high-alloy material, machined to exacting tolerances and subjected to an industry-unique heat-treatment process for durability and reliability. It is available in multiple sizes for drilling rigs rated up to 5500 ft-lb (7455 Nm) of torque. On the jobsite, you'll appreciate the coarse and tapered thread profile allowing four-turn makeup. It also features an eight-sided collar to make flat alignment easier to handle.



QUICKFIRE CONNECTION SYSTEM

Each part includes a manufactured date and part number for convenient identification and traceability.



PREMIUM HOUSING

Premium housings from Vermeer integrate many of the robust and proven design characteristics of the rock-focused Armor drilling system into a versatile tool for soft to intermediate ground conditions.

Heavy-duty, heat-treated sonde lid helps minimize signal distortion caused by flexing.

Highly adaptable rear API connection helps realize the full wear life of the housing, improving efficiency.

Proven single pin sonde lid retention

Dual gun-drilled water ports help maximize drilling fluid flow/pressure and decrease incidents of plugging.



PART NO.	OUTSIDE DIAMETER	SONDE	MODEL COMPATIBILITY	CONNECTION	BIT BOLT PATTERN	PRICE USD
296408265	2.75" (7 cm)	DCI 15" (38.1 cm)	D6x6 – D10x15 S3	2-4 ACME Box	Vermeer 6-hole – 1/2" bolt	\$998
296448831	2.75" (7 cm)	DCI 15" (38.1 cm)	D6x6 – D10x15 S3	2" API IF Box	Vermeer 6-hole – 1/2" bolt	\$1,077
296428729	2.75" (7 cm)	DCI 19" (48.3 cm)	D6x6 – D10x15 S3	2-4 ACME Box	Vermeer 6-hole – 1/2" bolt	\$1,631
296459727	2.75" (7 cm)	SubSite 17T	JT5 – JT10	2" API IF Box	Vermeer 6-hole + Ditch Witch 6-hole – 1/2" bolt	\$1,087
296408264	3" (7.6 cm)	DCI 15" (38.1 cm)	D16x20 – D24x40 S3	2.375" API Reg Box	Vermeer 6-hole – 1/2" bolt	\$1,103
296428717	3" (7.6 cm)	DCI 19" (48.3 cm)	D16x20 – D24x40 S3	2.375" API Reg Box	Vermeer 6-hole – 1/2" bolt	\$1,658
296428796	3" (7.6 cm)	SubSite 17T	JT20 – JT25	2.375" API Reg Box	Vermeer 6-hole + Ditch Witch 6-hole – 1/2" bolt	\$1,242
296406540	3.25" (8.3 cm)	DCI 15" (38.1 cm)	D24x40 S3 – D40x55 S3	2.375" API Reg Box	Vermeer 6-hole – 1/2" bolt	\$1,156
296428722	3.25" (8.3 cm)	DCI 19" (48.3 cm)	D24x40 S3 – D40x55 S3	2.375" API Reg Box	Vermeer 6-hole – 1/2" bolt	\$1,723
296459729	3.25" (8.3 cm)	SubSite 17T	JT25 – JT40	2.375" API Reg Box	Vermeer 6-hole + Ditch Witch 6-hole – 1/2" bolt	\$1,294
296408266	3.5" (8.9 cm)	DCI 15" (38.1 cm)	D60x90 – D80x100 Series II	2.875" API Reg Box	Vermeer 6-hole – 5/8" bolt	\$1,576
296428725	3.5" (8.9 cm)	DCI 19" (48.3 cm)	D60x90 – D80x100 Series II	2.875" API Reg Box	Vermeer 6-hole – 5/8" bolt	\$2,122
296459731	3.5" (8.9 cm)	SubSite 17T	JT60	2.875" API Reg Box	Vermeer 6-hole – 5/8" bolt	\$1,656
296408267	4.5" (11.4 cm)	DCI 15" (38.1 cm)	D100x120 – D100x140 S3	3.5" API Reg Box	Vermeer 6-hole – 3/4" bolt	\$2,101
296428727	4.5" (11.4 cm)	DCI 19" (48.3 cm)	D100x120 – D100x140 S3	3.5" API Reg Box	Vermeer 6-hole – 3/4" bolt	\$2,485
296456939	4.5" (11.4 cm)	DCI 19" (48.3 cm)	D100x120 – D100x140 S3	3.5" API IF Box	Vermeer 6-hole – 3/4" bolt	\$2,627
296459733	4.5" (11.4 cm)	SubSite 17T	JT100	3.5" API Reg Box	Vermeer 6-hole – 3/4" bolt	\$2,174

ARMOR BOLT-ON BITS

Expand the capabilities of your Premium housing with the Armor bolt-on Gauntlet and Lance bits. Each feature similar bit designs from the rock-focused Armor drilling system. Armor bolt-on bits are only compatible with the Vermeer Premium housing lineup.



PART NO.	DESCRIPTION	PRICE USD
296466146	3.5" (8.9 cm) dia. Armor Gauntlet Bit Bolt-on for 2.75" (7 cm) Prem Housing	\$1,346
296466148	4" (10.2 cm) dia. Armor Gauntlet Bit Bolt-on for 3" (7.6 cm) Prem Housing	\$1,553
296466147	3.5 (8.9 cm) dia. Armor Lance Bit Bolt-on for 2.75" (7 cm) Prem Housing	\$1,132
296466149	4" (10.2 cm) dia. Armor Lance Bit Bolt-on for 3" (7.6 cm) Prem Housing	\$1,242



VERMEER ACE™ BITS. PICK THE BIT THAT'S IN IT FOR THE LONG HAUL.

Vermeer Ace bits provide durability and wearability. The plug-style tooth design of the Ace bit allows teeth to be positioned closer to each other.



Ace Standard Drill Bit

The standard bit features a rounded bit face to assist steering performance and offers durability, longevity and wearability for **softer ground conditions that are more abrasive, medium packed soils and light gravel.**

PART NO.	BOLT PATTERN	WIDTH	PRICE USD
296415439	VM 6-hole – 1/2" (1.3 cm) bolt	4" (10.2 cm)	\$323
296415498	VM 6-hole – 1/2" (1.3 cm) bolt	4.5" (11.3 cm)	\$343
296415445	VM 6-hole – 1/2" (1.3 cm) bolt	5" (12.7 cm)	\$388
296415454	DW 5-hole – 12 mm bolt	4" (10.2 cm)	\$323
296415451	DW 6-hole – 16 mm bolt	4" (10.2 cm)	\$323
296415462	DW 5-hole – 12 mm bolt	5" (12.7 cm)	\$388
296415459	DW 6-hole – 16 mm bolt	5" (12.7 cm)	\$388



Ace Pro Drill Bit

A step up from our standard Ace bit, it features a semi-aggressive tapered front design for penetration in harder ground conditions — offering even greater durability, longevity and wearability to tackle **loam to moderately aggressive cobble, sand and hard pan**.

PART NO.	BOLT PATTERN	WIDTH	PRICE USD
296449348	VM 5-hole – 3/8" (1 cm) bolt	3" (7.6 cm)	\$301
296415473	VM 6-hole – 1/2" (1.3 cm) bolt	3.5" (8.9 cm)	\$354
296415374	VM 6-hole – 1/2" (1.3 cm) bolt	4" (10.2 cm)	\$385
296415492	VM 6-hole – 1/2" (1.3 cm) bolt	4.5" (11.4 cm)	\$412
296415394	VM 6-hole – 1/2" (1.3 cm) bolt	5" (12.7 cm)	\$433
296449499	DW 3-hole – 12 mm bolt	3" (7.6 cm)	\$417
296415417	DW 5-hole – 12 mm bolt	4" (10.2 cm)	\$393
296415420	DW 6-hole – 16 mm bolt	4" (10.2 cm)	\$393
296415448	DW 5-hole – 12 mm bolt	5" (12.7 cm)	\$441
296415426	DW 6-hole – 16 mm bolt	5" (12.7 cm)	\$441



Ace Pro Extreme Drill Bit

Sharing the same profile of the Ace Pro, the Ace Pro Extreme balances steerability and penetration. Features two times the carbide teeth along the full edge of the bit to extend wear life in **cobble, hard pan and light rock**.

PART NO.	BOLT PATTERN	WIDTH	PRICE USD
296537785	VM 5-hole – 3/8" bolt	3" (7.6 cm)	\$510
296537784	VM 6-hole – 1/2" bolt	3.5" (8.9 cm)	\$561
296537783	VM 6-hole – 1/2" bolt	4" (10.2 cm)	\$587
296537782	VM 6-hole – 1/2" bolt	4.5" (11.3 cm)	\$600
296537781	VM 6-hole – 1/2" bolt	5" (12.7 cm)	\$638
296537900	DW 6-hole – 16 mm bolt	4" (10.2 cm)	\$587
296537903	DW 6-hole – 16 mm bolt	5" (12.7 cm)	\$638



Domed button-style tooth is designed to absorb the shock of harder conditions.

Ace Premium Drill Bit

The premium Ace bit features an aggressive tapered bit front to help penetration rates and offers superior durability, longevity and wearability for high risk, aggressive ground conditions such as **heavy cemented cobble, hard packed soils and softer shale**.

PART NO.	BOLT PATTERN	WIDTH	PRICE USD
296449347	VM 6-hole – 1/2" (1.3 cm) bolt	4" (10.2 cm)	\$502
296449341	VM 6-hole – 1/2" (1.3 cm) bolt	4.5" (11.3 cm)	\$528
296449344	VM 6-hole – 1/2" (1.3 cm) bolt	5" (12.7 cm)	\$560
296449345	DW 5-hole – 12 mm bolt	4" (10.2 cm)	\$502
296449346	DW 6-hole – 16 mm bolt	4" (10.2 cm)	\$502
296449342	DW 5-hole – 12 mm bolt	5" (12.7 cm)	\$560
296449343	DW 6-hole – 16 mm bolt	5" (12.7 cm)	\$560



Bit Bolts

PART NO.	DESCRIPTION	HOUSING COMPATIBILITY	PRICE USD
512006	3/8" Bolt	2" (5.1 cm) - 2.25" (5.7 cm) OD	\$1.33
129667010	1/2" Bolt	2.75" (7 cm) - 3.25" (8.3 cm) OD	\$0.86
296260026	5/8" Bolt	3.5" (8.9 cm) OD	\$1.56
85627055	3/4" Bolt	4.5" (11.4 cm) OD	\$3.73

Don't see what you're looking for? Talk to your local Vermeer dealer for more information and options for competitor compatibilities.

DRILL BITS

Vermeer drill bits are, in a word, tough. They start with Vermeer-specified high-alloy, heat-treated steel for durability and wear-resistance. Each bit is designed to meet the exacting tolerances for Vermeer HDDs to help maintain peak performance.

Standard Drill Bit

Performance is standard with this bit. It includes a quick shot hole and is an economical option for softer soil conditions such as **loam, black dirt and sandy loam**.

PART NO.	BOLT PATTERN	WIDTH	PRICE USD
246570001	VM 6-hole – 1/2" (1.3 cm) bolt	3.5" (8.9 cm)	\$84
296255334	VM 6-hole – 1/2" (1.3 cm) bolt	4" (10.2 cm)	\$144
296255331	VM 6-hole – 1/2" (1.3 cm) bolt	4" (10.2 cm)	\$122
296255332	VM 6-hole – 1/2" (1.3 cm) bolt	4.5" (11.4 cm)	\$135
296255333	VM 6-hole – 1/2" (1.3 cm) bolt	5" (12.7 cm)	\$155



Standard Hardfaced Drill Bit

PART NO.	BOLT PATTERN	WIDTH	PRICE USD
272446001	VM 5-hole – 3/8" (1 cm) bolt	2.25" (5.7 cm)	\$112
296274213	VM 5-hole – 3/8" (1 cm) bolt	2.5" (6.4 cm)	\$91
296274214	VM 5-hole – 3/8" (1 cm) bolt	3" (7.6 cm)	\$94
296274215	VM 5-hole – 3/8" (1 cm) bolt	3.5" (8.9 cm)	\$97
246798001	VM 6-hole – 1/2" (1.3 cm) bolt	3" (7.6 cm)	\$96
246799001	VM 6-hole – 1/2" (1.3 cm) bolt	3.5" (8.9 cm)	\$107
296255334	VM 6-hole – 1/2" (1.3 cm) bolt	4" (10.2 cm)	\$144
296255335	VM 6-hole – 1/2" (1.3 cm) bolt	4.5" (11.4 cm)	\$157
296255336	VM 6-hole – 1/2" (1.3 cm) bolt	5" (12.7 cm)	\$190
296255340*	VM 6-hole – 5/8" (1.6 cm) bolt	5" (12.7 cm)	\$255
296255341*	VM 6-hole – 5/8" (1.6 cm) bolt	6" (15.2 cm)	\$248
296449302	DW 5-hole – 12 mm bolt	4" (10.2 cm)	\$145
296449295	DW 6-hole – 16 mm bolt	4" (10.2 cm)	\$145
296449300	DW 5-hole – 12 mm bolt	5" (12.7 cm)	\$195
296449296	DW 6-hole – 16 mm bolt	5" (12.7 cm)	\$195

*Does not include quick shot hole.



Gladiator Saber Bit

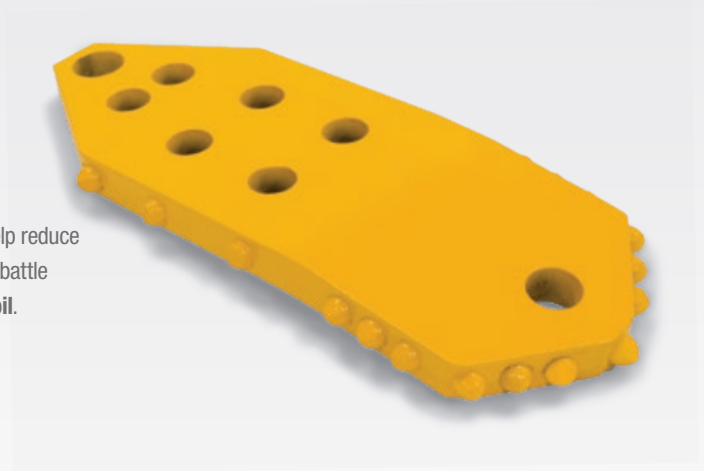
The Gladiator saber bit features an aggressive tapered design for penetrating hard-packed soil conditions. Includes the Gladiator bit standard of carbide buttons to help extend wear life, making it ready for **highly abrasive ground conditions**.

PART NO.	BOLT PATTERN	WIDTH	PRICE USD
296341835	6-hole – 1/2" (1.3 cm) bolt	4" (10.2 cm)	\$280
296341836	6-hole – 1/2" (1.3 cm) bolt	4.5" (11.4 cm)	\$297
296341837	6-hole – 1/2" (1.3 cm) bolt	5" (12.7 cm)	\$307

Gladiator Spear Bit

The Gladiator spear bit is exclusively designed with oversized carbide buttons to help reduce premature wear — with a rugged, pointed design. The Gladiator spear bit lets you battle compatible ground conditions from **loam to cobble and other highly abrasive soil**.

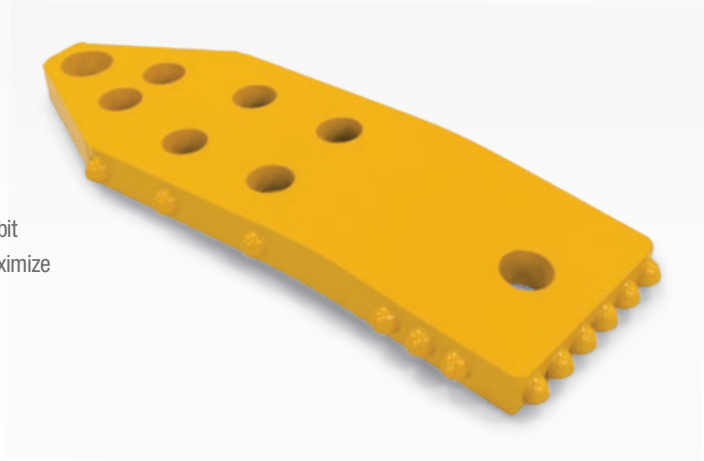
PART NO.	BOLT PATTERN	WIDTH	PRICE USD
296334309	6-hole – 1/2" (1.3 cm) bolt	3.5" (8.9 cm)	\$262
296334328	6-hole – 1/2" (1.3 cm) bolt	4" (10.2 cm)	\$272
296334306	6-hole – 1/2" (1.3 cm) bolt	4.5" (11.4 cm)	\$294
296334359	6-hole – 1/2" (1.3 cm) bolt	5" (12.7 cm)	\$306
296419299	6-hole – 1/2" (1.3 cm) bolt	6" (15.2 cm)	\$388



Gladiator Mallet Bit

Steer into the clear with the Gladiator mallet bit. It features the Gladiator-exclusive bit design with oversized carbide buttons for wear resistance as its flat face helps maximize steering control. It's ideal for **cobble and highly abrasive ground conditions**.

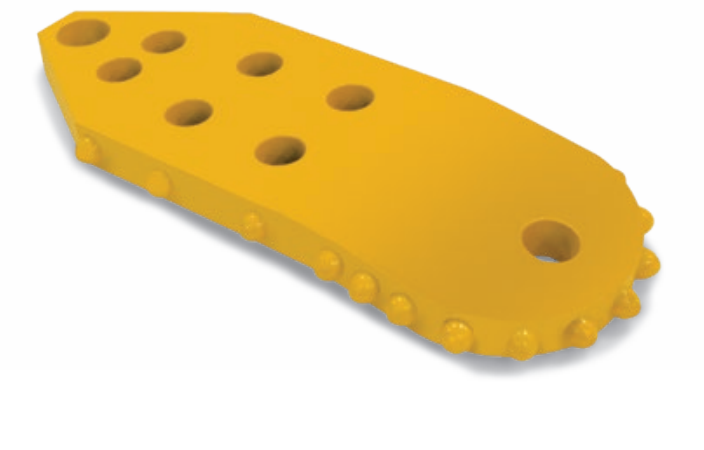
PART NO.	BOLT PATTERN	WIDTH	PRICE USD
296334312	6-hole – 1/2" (1.3 cm) bolt	3.5" (8.9 cm)	\$262
296334324	6-hole – 1/2" (1.3 cm) bolt	4" (10.2 cm)	\$272
296334303	6-hole – 1/2" (1.3 cm) bolt	4.5" (11.4 cm)	\$294
296334356	6-hole – 1/2" (1.3 cm) bolt	5" (12.7 cm)	\$306



Gladiator Club Bit

The Vermeer Gladiator club bit brings you the power of our exclusively designed oversized carbide buttons for wear resistance. This versatile series is ideal for **cobble and highly abrasive ground conditions**.

PART NO.	BOLT PATTERN	WIDTH	PRICE USD
296334350	6-hole – 1/2" (1.3 cm) bolt	3.5" (8.9 cm)	\$262
296334326	6-hole – 1/2" (1.3 cm) bolt	4" (10.2 cm)	\$272
296334300	6-hole – 1/2" (1.3 cm) bolt	4.5" (11.4 cm)	\$294
296334353	6-hole – 1/2" (1.3 cm) bolt	5" (12.7 cm)	\$306
296419303	6-hole – 1/2" (1.3 cm) bolt	6" (15.2 cm)	\$388

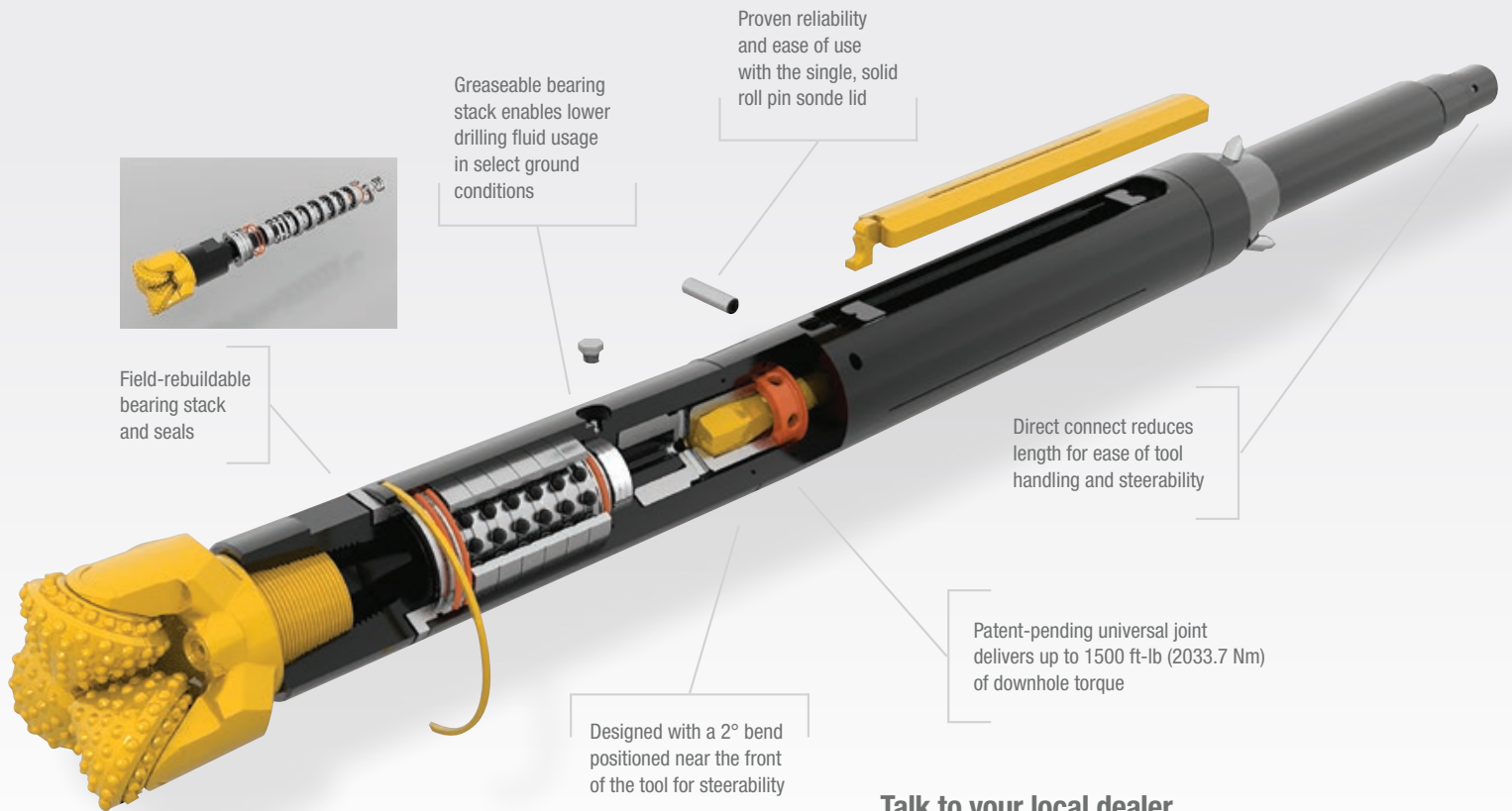


Don't see what you're looking for? Talk to your local Vermeer dealer for more information and options for competitor compatibilities.



RESPONSIVE DOWNHOLE STEERING FOR ROCK BORES.

To get the most from your dual rod HDD, choose rock drill heads designed to deliver an efficient performance. Vermeer RH15 and RH10 rock drill heads were developed in conjunction with the D40x55DR S3 and D23x30DR S3 Navigator® horizontal directional drills to give operators steering control and sonde security with its proven single roll pin lid. These greasable rock drill heads can be rebuilt in the field and are priced right to deliver value.



**Talk to your local dealer
for tricone and PDC bit options.**

PART NO.	DESCRIPTION	MODEL COMPATIBILITY	PRICE USD
296490378	RH10 Drill Head 15" (38.1 cm) Sonde, 2.875" API Reg Bit Box, 5.5' (14 cm) dia. min. bit	D23x30DR S3	\$6,426
296529337	RH10 Drill Head 15" (38.1 cm) Sonde, 2.875" API Reg Bit Box, 5.5' (14 cm) dia. min. bit*	JT3020 AT, JT30 AT	\$6,300
296537909	RH10 50 Hour Rebuild Kit		\$1,010
296537911	RH10 200 Hour Rebuild Kit		\$3,366
296514826	RH10 Drill Head Rebuild Tool Kit		\$1,850
296521054	PG5 Quick Pullback Grapple for 5.5" (14 cm) Tricone Bits		\$255
296479658	RH15 Drill Head 15" (38.1 cm) Sonde, 3.5" API Bit Box, 6.25" (15.9 cm) dia. min. bit	D40x55DR S3	\$7,603
296490296	RH15 Drill Head 19" (48.3 cm) Sonde, 3.5" API Bit Box, 6.25" (15.9 cm) dia. min. bit	D40x55DR S3	\$7,814
296479686	RH15 Drill Head 15" (38.1 cm) Sonde, 3.5" API Bit Box, 6.25" (15.9 cm) dia. min. bit	D36x50DR Series II	\$7,920
296490300	RH15 Drill Head 19" (48.3 cm) Sonde, 3.5" API Bit Box, 6.25" (15.9 cm) dia. min. bit	D36x50DR Series II	\$8,131
296490302	RH15 50 Hour Rebuild Kit		\$1,056
296490303	RH15 200 Hour Rebuild Kit - 15" (38.1 cm) Sonde (For 296479658, 296479686)		\$3,519
296490305	RH15 200 Hour Rebuild Kit - 19" (48.3 cm) Sonde (For 296490296, 296490300)		\$3,650
296479732	RH15 Drill Head Rebuild Tool Kit		\$1,913
296514927	PG6 Quick Pullback Grapple for 6.25" (15.9 cm) Tricone Bits		\$255
101562004	Vermeer Polyurea Grease (10-pack)		\$82

* Does not include hex coupler

PG5/PG6 Pullback Grapples



View our rebuild video on YouTube
youtube.com/vermeercorp



DESIGNED WITH YOU IN MIND.



ARMOR DRILLING SYSTEM

Prepare to win the tough jobs with the Armor drilling system from Vermeer. It's a single HDD tooling system with multiple drilling options designed to provide versatility and performance — one housing, multiple bits.

BRING YOUR BIT **BACK TO LIFE.**

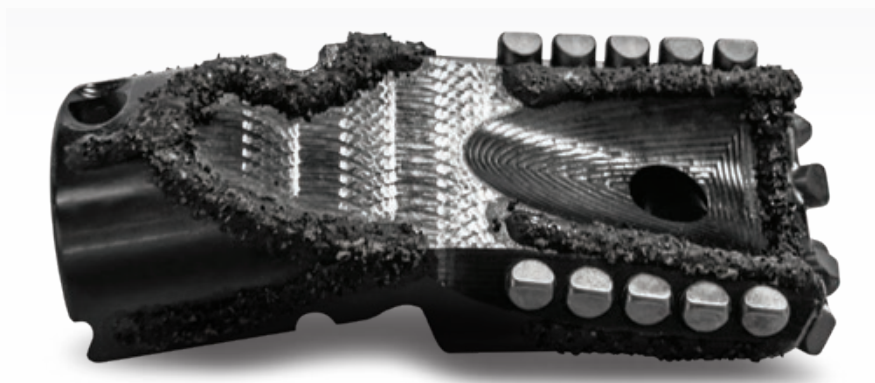
Every operator understands the value of the bits they use on the jobsite. Now, help extend the usable life of your bits with the Armor drilling system rebuild program. Send in your worn-down bits for rebuild by the manufacturer: Vermeer. Depending on the type of wear exhibited, Armor bits can be rebuilt multiple times. Before the rebuild process begins, every Armor bit will be reviewed by the Vermeer team of HDD tooling engineers and will undergo a comprehensive analysis by staff metallurgists.

Contact your local Vermeer dealer for more information on the Armor drilling system rebuild program.



Gauntlet Bit

The Gauntlet bit was designed for use in **soft to medium rock, shale and caliche** ground conditions up to 10,000 psi (68.9 MPa) with exceptional steering capabilities. Carbide buttons and hardfacing are strategically placed on the bit to enhance wear and performance characteristics. A replaceable three-tooth design delivers a consistent cutting structure for steering corrections to help maximize drilling performance.



Lance Original Bit

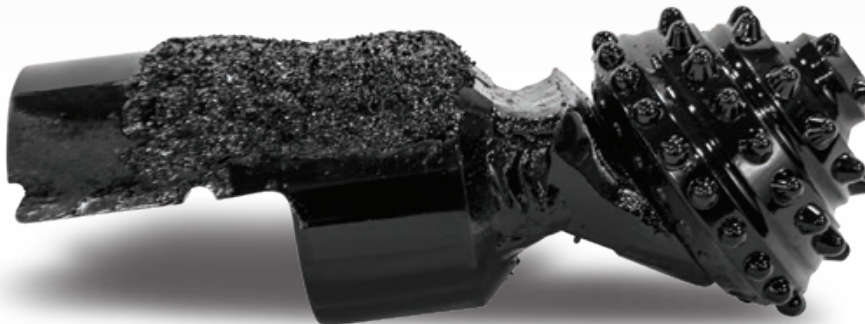
The Lance original bit is intended for use in **hard-packed soil, gravel and cobble**. The bit features a scoop design for steering capabilities and operator control to help limit wandering in challenging ground conditions. Carbide buttons and robotically applied hardfacing help improve overall bit wear in most abrasive drilling conditions.

ARMOR
DRILLING SYSTEM
BY VERMEER



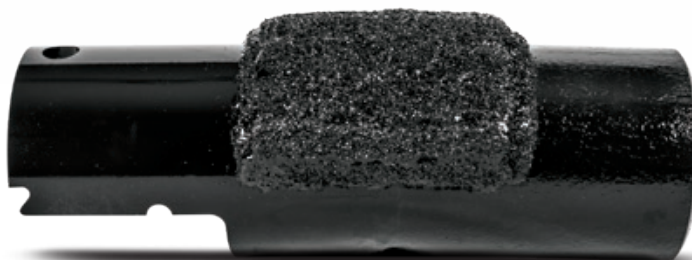
Lance Pro Bit

Featuring domed, plug-style teeth, the Lance Pro bit offers continuous carbide coverage across the front of the bit to help extend wear life. **Carbide buttons protect the bit mount section from wear so it can be rebuilt.** With a tendency to cut on center, the Lance Pro bit helps you execute your bore as planned.



Single Roller Cone Bit

Designed to deliver versatility in cobble and broken formations, the cone rotation helps smooth out the entire drill string reducing torque spikes. The bit is used for **extreme cobbles and soft to medium rock.**



API Bent Sub Adaptor

For use in tandem with any API pin bit, including tricone and PDC configurations.

A full-page photograph showing a construction worker in a red hard hat and high-visibility vest operating a large, red Vermeer Armor drilling system. The machine is positioned on a grassy area with a dense forest in the background. The worker is seated on the machine, which has two large vertical red columns. A long, dark pipe is visible extending from the bottom of the machine. The scene is lit with warm, golden light, suggesting late afternoon or early morning.

PREPARE FOR BATTLE.

The Vermeer Armor drilling system is an economic HDD tooling solution for utility bores in light to medium rock and cobble. Combining the strength and performance of the Gauntlet and Lance bits with the versatility of premium transmitter housing and an efficient pullback tool, the Armor drilling system delivers versatility in a range of challenging soil conditions.

Small Armor 2.375" API REG (D16x20-D24x40 S3)

PART NO.	DESCRIPTION	PRICE USD
296466151	Armor Housing System 3.25" (8.3 cm) OD, 2.375" API Reg Box	\$2,443
296344406	Armor Sonde Lid Kit (Lid, Roll Pins)	\$328
296428974	Armor Bit Hardware Kit (Solid Pin, O-rings, Capscrews)	\$19
296466222	Armor Gauntlet Bit – 4.25" (10.8 cm) with Pullback	\$2,575
296496183	Armor Gauntlet Bit Small Pullback Hook	\$171
296371274	Armor Gauntlet Bit Tooth – Medium Rock	\$13
296386883	Armor Gauntlet Bit Tooth – Soft Rock	\$16
296456950	Armor Lance Bit Pro – 4.25" (10.8 cm) with Pullback	\$2,122
296493061	Lance Bit (Pro or Original) Small Pullback Hook	\$112
296456809	Armor Lance Bit Original – 4.25" (10.8 cm) with Pullback	\$1,830
296428590	Pullback Mount Assembly	\$388
296428584	Armor Single Roller Cone Bit – 4.25" (10.8 cm)	\$1,936
296428588	Armor Bent Sub Adapter – 2.375" API Reg	\$1,030
296428587	Armor Pullback Swivel – 24,000 lb (10,866.2 kg) rated	\$1,290
296479206	6" (15.2 cm) Armor Fluted Reamer, Rotary Teeth, 24k Pull Eye	\$1,601
296496040	6" (15.2 cm) Armor Fluted Reamer, Rotary Teeth, 24k Swivel	\$1,807
296530680	8" (20.3 cm) Armor Fluted Reamer, Rotary Teeth, 24k Swivel	\$2,250

Medium Armor 2.875" API REG (D23x30-D40x55DR)

PART NO.	DESCRIPTION	PRICE USD
296466152	Armor Side Load Housing System – 3.75" (9.5 cm) OD, 2.875" API	\$3,559
296344404	Armor Sonde Lid Kit (Lid, Roll Pins)	\$373
296428973	Armor Bit Hardware Kit	\$19
296456837	Armor Gauntlet Bit – 5.5" (14 cm) with Pullback	\$4,077
296496178	Armor Gauntlet Bit Medium Pullback Hook	\$181
296352129	Armor Gauntlet Bit Tooth – Medium Rock	\$13
296352180	Armor Gauntlet Bit Tooth – Soft Rock	\$20
296456953	Armor Lance Bit Pro 5" (12.7 cm) with Pullback	\$2,432
296493074	Armor Lance Bit (Pro or Original) Medium Pullback Hook	\$152
296456845	Armor Lance Bit Original – 5" (12.7 cm) with Pullback	\$2,002
296428636	Pullback Mount Assembly	\$699
296428619	Armor Single Roller Cone Bit – 4.25" (10.8 cm)	\$2,200
296428612	Armor Bent Sub Adapter – 2.875" API Reg	\$1,134
296428610	Armor Swivel – 24,000 lb (10,866.2 kg) rated	\$1,281
296479204	6" (15.2 cm) Armor Fluted Reamer, Rotary Teeth, 24k Pull Eye	\$1,746
296488188	6" (15.2 cm) Armor Fluted Reamer, Rotary Teeth, 24k Swivel	\$1,952
296493470	6" (15.2 cm) Armor Fluted Reamer, Shark Teeth, 24k Swivel	\$1,952
296530678	8" (20.3 cm) Armor Fluted Reamer, Rotary Teeth, 24k Swivel	\$2,390

Large Armor 2.875" API IF (D50x100-D100x43 S3)

PART NO.	DESCRIPTION	PRICE USD
296466153	Armor Housing System 4.25" (10.8 cm) OD, 2.875" API IF	\$4,484
296344404	Armor Sonde Lid Kit	\$373
296428972	Armor Bit Hardware Kit (Solid Pin, O-rings, Capscrews)	\$26
296488183	Armor Gauntlet Bit – 6.5" (16.5 cm)	\$4,918
296341728	Armor Gauntlet Bit Tooth – Medium Rock	\$29
296392367	Armor Gauntlet Bit Tooth – Soft Rock	\$31
296484008	Armor Lance Bit Pro – 6.25" (15.8 cm)	\$2,923
296484086	Armor Lance Bit Pro – 7.25" (18.4 cm)	\$3,248
296341742	Armor Lance Bit Original – 6.5" (16.5 cm)	\$2,485
296341747	Armor Lance Bit Original – 7.25" (18.4 cm)	\$2,692
296396008	Armor Single Roller Cone Bit – 6.5" (16.5 cm)	\$2,951
296396011	Armor Bent Sub Adapter – 3.5" API Reg	\$1,153

Armor Accessories

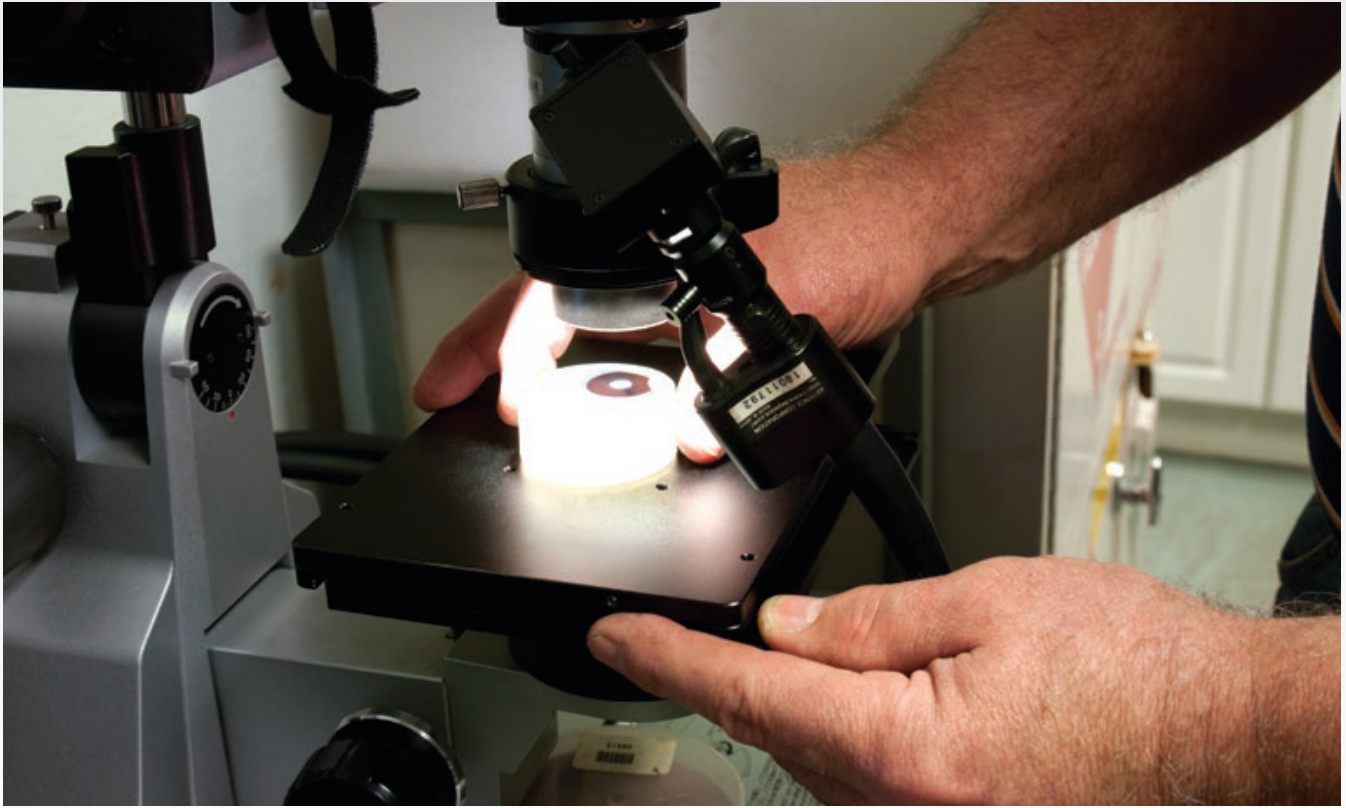
PART NO.	DESCRIPTION	PRICE USD
296344264	Armor Multi-Tool Small and Medium	\$283
296392362	Armor Multi-Tool Large	\$290
296344402	Armor Sonde Isolator and Timing Kit	\$29
296412939	Armor Timing Key – Steel	\$50



DIRECT WITH API THREAD PLATFORM SOLUTION.

The Vermeer Armor Direct system allows drilling crews to use bits from the Armor system on an API thread platform. Designed to be an economical rock drilling solution, the Armor Direct system offerings include a new universal housing with single pin sonde lid retention; the Lance Pro bit for hard-packed gravel and cobble; the Gauntlet bit for soft rock, medium rock, shale and caliche up to 10,000 pounds per square inch (68.9 MPa); and the Vermeer single roller cone bit for cobble and broken formations.

PART NO.	DESCRIPTION	MODEL COMPATIBILITY	PRICE USD
296520797	Armor Direct Universal Housing 2.375" API Reg BxB, 15" or 19" DCI	D16x20 - D24x40 S3	\$1,600
296520790	4.25" (10.8 cm) Lance Bit Pro x 2.375" API Reg	D16x20 - D24x40 S3	\$1,850
296488122	4.25" (10.8 cm) Armor Gauntlet Bit x 2.375" API Reg	D16x20 - D24x40 S3	\$2,233
296520804	4.25" (10.8 cm) Armor Single Roller Cone x 2.375" API Reg bit	D16x20 - D24x40 S3	\$1,715
296257756	Dirt Bit Sub - Vermeer .5" 6-bolt bit x 2.375" API Reg	D16x20 - D24x40 S3	\$561
296517138	Armor Direct Universal Housing 2.875" API Reg BxB, 15" or 19" DCI	D24x40 - D40x55 S3	\$2,200
296517122	5" (12.7 cm) Lance Bit Pro x 2.875" API Reg	D24x40 - D40x55 S3	\$2,150
296484199	5.5" (14 cm) Armor Gauntlet Bit x 2.875" API Reg	D24x40 - D40x55 S3	\$2,650
296517142	5.5" (14 cm) Armor Single Roller Cone x 2.875" API Reg bit	D24x40 - D40x55 S3	\$2,175
296268770	Dirt Bit Sub - Vermeer .63" 6-bolt bit x 2.875" API Reg bit	D24x40 - D40x55 S3	\$765
296517018	Armor Direct Universal Housing 3.5" API Reg BxB, 15" or 19" DCI	D60x90 - D100x140 S3	\$2,500
296517046	7.25" (18.4 cm) Lance Bit Pro x 3.5" API Reg	D60x90 - D100x140 S3	\$2,938
296488132	6.5" (16.5 cm) Armor Gauntlet Bit x 3.5" API Reg	D60x90 - D100x140 S3	\$3,248
296517042	6.5" (16.5 cm) Armor Single Roller Cone x 3.5" API Reg bit	D60x90 - D100x140 S3	\$2,450
296259972	Dirt Bit Sub - Vermeer .63" 6-bolt bit x 3.5" API Reg bit	D60x90 - D100x140 S3	\$969



HDD TOOLING SCIENCE — **VERMEER METALLURGY LAB TEST**

Just because one brand of tooling may look like another doesn't mean it's constructed the same. From drive chucks and drill rod, to transmitter housings, drill bits, reamers and adaptors, the quality of the metal used and how it was heat-treated can have a major impact on how it will perform and how long it can last in harsh working conditions. To make sure parts and pieces of HDD tooling produced meets high standards, Vermeer is one of the only manufacturers in the industry to invest in building its own metallurgy lab and staff it with experienced, degreed metallurgists.

Since 1992, the Vermeer Metallurgy Lab has been testing the chemical composition, tensile strength, hardness and impact toughness of Vermeer HDD tooling, parts and components. Using scientific methods, the Vermeer Metallurgy Lab examines the raw material used for manufacturing to determine quality, to help the productivity and longevity of the tooling.

**Talk to your local Vermeer
dealer to learn more.**

REAMERS

Vermeer puts its full range of reamer solutions to work for you. From the tried and true to pioneering designs, our lineup is ready to handle a wide variety of ground conditions you run into. As always, with Vermeer you can expect a world-class product offering to help meet your needs. Plus, when you come across the unexpected, you can rely on us for customized tooling options to meet specific applications, ground conditions and, of course, your personal preferences.



Fluted Reamer

Our fluted reamers get the job done with a robust through-shaft design and heat-treated, cast-alloy steel for durability. To help reduce the amount of resistance-causing spoil buildup, a built-in swivel minimizes the distance to the product pipe. Vermeer fluted reamers include robotically applied carbide mesh grit hardfacing for longevity. And they're available with rotary or shark teeth to create an aggressive cutting action. Ideal for rugged ground conditions ranging from **hard pan and soft rock to cobble**.

Standard threaded ports offer versatility in adjusting drilling fluid flow.



Fluted With Eye – Shark Teeth

PART NO.	MODEL COMPATIBILITY	FRONT CONNECTION	REAR CONNECTION	CUTTING SIZE	PULL EYE/PULL EYE CAPACITY	PRICE USD
296341430	D6x6 – D10x15 S3	QuickFire System 300 Pin	Pull Eye	4.5" (11.4 cm)	24,000 lb (10,886.2 kg)	\$741
296341431	D16x20 – D24x40 S3	QuickFire System 400 Pin	Pull Eye	4.5" (11.4 cm)	24,000 lb (10,886.2 kg)	\$798
296341432	D6x6 – D10x15 S3	1.625" Hex Pin	Pull Eye	4.5" (11.4 cm)	24,000 lb (10,886.2 kg)	\$671
296341433	D16x20 – D24x40 S3	2.125" Hex Pin	Pull Eye	4.5" (11.4 cm)	24,000 lb (10,886.2 kg)	\$750
296341434	D7x11 – D24x40 S3	2.375" API Reg Box	Pull Eye	6" (15.2 cm)	24,000 lb (10,886.2 kg)	\$1,084
296341435	D7x11 – D24x40 S3	2.375" API Reg Box	Pull Eye	8" (20.3 cm)	24,000 lb (10,886.2 kg)	\$1,517
296341436	D7x11 – D24x40 S3	2.375" API Reg Box	Pull Eye	10" (25.4 cm)	24,000 lb (10,886.2 kg)	\$1,696
296341437	D7x11 – D24x40 S3	2.375" API Reg Box	Pull Eye	12" (30.5 cm)	24,000 lb (10,886.2 kg)	\$2,201
296341438	D7x11 – D24x40 S3	2.375" API Reg Box	Pull Eye	14" (35.6 cm)	24,000 lb (10,886.2 kg)	\$2,541
296341439	D7x11 – D24x40 S3	2.375" API Reg Box	Pull Eye	16" (40.6 cm)	24,000 lb (10,886.2 kg)	\$3,351
235095001	Replacement Shark Teeth – 1.25" (3.2 cm) Weld-On					\$5

Fluted With Eye – Rotary Teeth

PART NO.	MODEL COMPATIBILITY	FRONT CONNECTION	REAR CONNECTION	CUTTING SIZE	PULL EYE/PULL EYE CAPACITY	PRICE USD
296341440	D6x6 – D10x15 S3	QuickFire System 300 Pin	Pull Eye	4.5" (11.4 cm)	24,000 lb (10,886.2 kg)	\$741
296341441	D16x20 – D24x40 S3	QuickFire System 400 Pin	Pull Eye	4.5" (11.4 cm)	24,000 lb (10,886.2 kg)	\$798
296341442	D6x6 – D10x15 S3	1.625" Hex Pin	Pull Eye	4.5" (11.4 cm)	24,000 lb (10,886.2 kg)	\$671
296341443	D16x20 – D24x40 S3	2.125" Hex Pin	Pull Eye	4.5" (11.4 cm)	24,000 lb (10,886.2 kg)	\$750
296341444	D7x11 – D24x40 S3	2.375" API Box	Pull Eye	6" (15.2 cm)	24,000 lb (10,886.2 kg)	\$1,084
296341445	D7x11 – D24x40 S3	2.375" API Box	Pull Eye	8" (20.3 cm)	24,000 lb (10,886.2 kg)	\$1,517
296341446	D7x11 – D24x40 S3	2.375" API Box	Pull Eye	10" (25.4 cm)	24,000 lb (10,886.2 kg)	\$1,696
296341447	D7x11 – D24x40 S3	2.375" API Box	Pull Eye	12" (30.5 cm)	24,000 lb (10,886.2 kg)	\$2,201
296341448	D7x11 – D24x40 S3	2.375" API Box	Pull Eye	14" (35.6 cm)	24,000 lb (10,886.2 kg)	\$2,541
296341449	D7x11 – D24x40 S3	2.375" API Box	Pull Eye	16" (40.6 cm)	24,000 lb (10,886.2 kg)	\$3,351
227684001	Replacement Rotary Teeth – Standard Weld-On					\$8

Fluted With Swivel – Shark Teeth

PART NO.	MODEL COMPATIBILITY	FRONT CONNECTION	REAR CONNECTION	CUTTING SIZE	PULL EYE/PULL EYE CAPACITY	PRICE USD
296341426	D6x6 – D10x15 S3	QuickFire System 300 Pin	Swivel	4.5" (11.4 cm)	24,000 lb (10,886.2 kg)	\$1,056
296341427	D16x20 – D24x40 S3	QuickFire System 400 Pin	Swivel	4.5" (11.4 cm)	24,000 lb (10,886.2 kg)	\$1,130
235058001	D7x11 – D24x40 S3	1.625" Hex Pin	Swivel	4.5" (11.4 cm)	24,000 lb (10,886.2 kg)	\$1,197
235063001	D7x11 – D24x40 S3	2.125" Hex Pin	Swivel	4.5" (11.4 cm)	24,000 lb (10,886.2 kg)	\$1,274
296258154	D7x11 – D24x40 S3	2.375" API Reg Box	Swivel	6" (15.2 cm)	24,000 lb (10,886.2 kg)	\$1,610
296258156	D7x11 – D24x40 S3	2.375" API Reg Box	Swivel	8" (20.3 cm)	24,000 lb (10,886.2 kg)	\$2,043
296260059	D7x11 – D24x40 S3	2.375" API Reg Box	Swivel	10" (25.4 cm)	24,000 lb (10,886.2 kg)	\$2,221
296260061	D7x11 – D24x40 S3	2.375" API Reg Box	Swivel	12" (30.5 cm)	24,000 lb (10,886.2 kg)	\$2,727
296260063	D7x11 – D24x40 S3	2.375" API Reg Box	Swivel	14" (35.6 cm)	24,000 lb (10,886.2 kg)	\$3,117
296260065	D7x11 – D24x40 S3	2.375" API Reg Box	Swivel	16" (40.6 cm)	24,000 lb (10,886.2 kg)	\$3,876
235095001	Replacement Shark Teeth – 1.25" (3.2 cm) Weld-On					\$5

Fluted With Swivel – Rotary Teeth

PART NO.	MODEL COMPATIBILITY	FRONT CONNECTION	REAR CONNECTION	CUTTING SIZE	PULL EYE/PULL EYE CAPACITY	PRICE USD
296341428	D6x6 – D10x15 S3	QuickFire System 300 Pin	Swivel	4.5" (11.4 cm)	24,000 lb (10,886.2 kg)	\$1,056
296341429	D16x20 – D24x40 S3	QuickFire System 400 Pin	Swivel	4.5" (11.4 cm)	24,000 lb (10,886.2 kg)	\$1,130
235013001	D6x6 – D10x15 S3	1.625" Hex Pin	Swivel	4.5" (11.4 cm)	24,000 lb (10,886.2 kg)	\$1,197
232555001	D7x11 – D24x40 S3	2.125" Hex Pin	Swivel	4.5" (11.4 cm)	24,000 lb (10,886.2 kg)	\$1,274
296258153	D7x11 – D24x40 S3	2.375" API Reg Box	Swivel	6" (15.2 cm)	24,000 lb (10,886.2 kg)	\$1,610
296258155	D7x11 – D24x40 S3	2.375" API Reg Box	Swivel	8" (20.3 cm)	24,000 lb (10,886.2 kg)	\$2,043
296260058	D7x11 – D24x40 S3	2.375" API Reg Box	Swivel	10" (25.4 cm)	24,000 lb (10,886.2 kg)	\$2,221
296260060	D7x11 – D24x40 S3	2.375" API Reg Box	Swivel	12" (30.5 cm)	24,000 lb (10,886.2 kg)	\$2,727
296260062	D7x11 – D24x40 S3	2.375" API Reg Box	Swivel	14" (35.6 cm)	24,000 lb (10,886.2 kg)	\$3,117
296260064	D7x11 – D24x40 S3	2.375" API Reg Box	Swivel	16" (40.6 cm)	24,000 lb (10,886.2 kg)	\$3,876
227684001	Replacement Rotary Teeth – Standard Weld-On					\$8

Fluted With Swivel – Rotary Teeth

PART NO.	MODEL COMPATIBILITY	FRONT CONNECTION	REAR CONNECTION	CUTTING SIZE	PULL EYE/PULL EYE CAPACITY	PRICE USD
296341450	D36x50 – D60x90 S3	2.875" API Reg Box	Swivel	10" (25.4 cm)	50,000 lb (22,679.6 kg)	\$4,409
296341451	D36x50 – D60x90 S3	2.875" API Reg Box	Swivel	12" (30.5 cm)	50,000 lb (22,679.6 kg)	\$4,568
296341452	D36x50 – D60x90 S3	2.875" API Reg Box	Swivel	14" (35.6 cm)	50,000 lb (22,679.6 kg)	\$4,813
296341453	D36x50 – D60x90 S3	2.875" API Reg Box	Swivel	16" (40.6 cm)	50,000 lb (22,679.6 kg)	\$5,425
296341454	D36x50 – D60x90 S3	2.875" API Reg Box	Swivel	18" (45.7 cm)	50,000 lb (22,679.6 kg)	\$5,764
296341455	D36x50 – D60x90 S3	2.875" API Reg Box	Swivel	20" (50.8 cm)	50,000 lb (22,679.6 kg)	\$6,658
296341456	D36x50 – D60x90 S3	2.875" API Reg Box	Swivel	22" (55.9 cm)	50,000 lb (22,679.6 kg)	\$7,358
296341457	D36x50 – D60x90 S3	2.875" API Reg Box	Swivel	24" (61 cm)	50,000 lb (22,679.6 kg)	\$7,900
296341458	D36x50 – D60x90 S3	2.875" API Reg Box	Swivel	26" (66 cm)	50,000 lb (22,679.6 kg)	\$8,899
296341459	D36x50 – D60x90 S3	2.875" API Reg Box	Swivel	28" (71.1 cm)	50,000 lb (22,679.6 kg)	\$9,929
296341460	D36x50 – D60x90 S3	2.875" API Reg Box	Swivel	30" (76.2 cm)	50,000 lb (22,679.6 kg)	\$11,201
296264865	Replacement Rotary Teeth – Heavy-Duty Weld-On					\$12

Fluted With Swivel – Rotary Teeth

PART NO.	MODEL COMPATIBILITY	FRONT CONNECTION	REAR CONNECTION	CUTTING SIZE	SWIVEL/SWIVEL CAPACITY	PRICE USD
296341461	D36x50 – D100x140 S3	3.5" API Reg Box	Swivel	10" (25.4 cm)	100,000 lb (45,359.2 kg)	\$5,763
296341462	D36x50 – D100x140 S3	3.5" API Reg Box	Swivel	12" (30.5 cm)	100,000 lb (45,359.2 kg)	\$5,986
296341463	D36x50 – D100x140 S3	3.5" API Reg Box	Swivel	14" (35.6 cm)	100,000 lb (45,359.2 kg)	\$6,647
296341464	D36x50 – D100x140 S3	3.5" API Reg Box	Swivel	16" (40.6 cm)	100,000 lb (45,359.2 kg)	\$7,012
296341465	D36x50 – D100x140 S3	3.5" API Reg Box	Swivel	18" (45.7 cm)	100,000 lb (45,359.2 kg)	\$7,597
296341466	D36x50 – D100x140 S3	3.5" API Reg Box	Swivel	20" (50.8 cm)	100,000 lb (45,359.2 kg)	\$8,197
296341467	D36x50 – D100x140 S3	3.5" API Reg Box	Swivel	22" (55.9 cm)	100,000 lb (45,359.2 kg)	\$9,192
296341468	D36x50 – D100x140 S3	3.5" API Reg Box	Swivel	24" (61 cm)	100,000 lb (45,359.2 kg)	\$9,542
296341469	D36x50 – D100x140 S3	3.5" API Reg Box	Swivel	26" (66 cm)	100,000 lb (45,359.2 kg)	\$10,732
296341470	D36x50 – D100x140 S3	3.5" API Reg Box	Swivel	28" (71.1 cm)	100,000 lb (45,359.2 kg)	\$11,568
296341471	D36x50 – D100x140 S3	3.5" API Reg Box	Swivel	30" (76.2 cm)	100,000 lb (45,359.2 kg)	\$12,816
296341472	D36x50 – D100x140 S3	3.5" API Reg Box	Swivel	32" (81.3 cm)	100,000 lb (45,359.2 kg)	\$14,209
296341473	D36x50 – D100x140 S3	3.5" API Reg Box	Swivel	34" (86.4 cm)	100,000 lb (45,359.2 kg)	\$15,276
296341474	D36x50 – D100x140 S3	3.5" API Reg Box	Swivel	36" (91.4 cm)	100,000 lb (45,359.2 kg)	\$16,180
296341475	D36x50 – D100x140 S3	3.5" API Reg Box	Swivel	38" (96.5 cm)	100,000 lb (45,359.2 kg)	\$20,012
296341476	D36x50 – D100x140 S3	3.5" API Reg Box	Swivel	40" (101.6 cm)	100,000 lb (45,359.2 kg)	\$24,704
296264865	Replacement Rotary Teeth – Heavy-Duty Weld-On					\$12

Fluted Box x Pin – Rotary Teeth

PART NO.	MODEL COMPATIBILITY	FRONT CONNECTION	REAR CONNECTION	CUTTING SIZE	PRICE USD
296341477	D36x50 – D100x140 S3	3.5" API Reg Box	3.5" API Reg Pin	10" (25.4 cm)	\$2,821
296341478	D36x50 – D100x140 S3	3.5" API Reg Box	3.5" API Reg Pin	12" (30.5 cm)	\$3,077
296341479	D36x50 – D100x140 S3	3.5" API Reg Box	3.5" API Reg Pin	14" (35.6 cm)	\$3,648
296341480	D36x50 – D100x140 S3	3.5" API Reg Box	3.5" API Reg Pin	16" (40.6 cm)	\$4,133
296341481	D36x50 – D100x140 S3	3.5" API Reg Box	3.5" API Reg Pin	18" (45.7 cm)	\$5,181
296341482	D36x50 – D100x140 S3	3.5" API Reg Box	3.5" API Reg Pin	20" (50.8 cm)	\$6,136
296341483	D36x50 – D100x140 S3	3.5" API Reg Box	3.5" API Reg Pin	22" (55.9 cm)	\$6,870
296341484	D36x50 – D100x140 S3	3.5" API Reg Box	3.5" API Reg Pin	24" (61 cm)	\$7,702
296341485	D36x50 – D100x140 S3	3.5" API Reg Box	3.5" API Reg Pin	26" (66 cm)	\$9,282
296341486	D36x50 – D100x140 S3	3.5" API Reg Box	3.5" API Reg Pin	28" (71.1 cm)	\$10,534
296341487	D36x50 – D100x140 S3	3.5" API Reg Box	3.5" API Reg Pin	30" (76.2 cm)	\$11,986
296341488	D36x50 – D100x140 S3	3.5" API Reg Box	3.5" API Reg Pin	32" (81.3 cm)	\$12,328
296341489	D36x50 – D100x140 S3	3.5" API Reg Box	3.5" API Reg Pin	34" (86.4 cm)	\$13,239
296341490	D36x50 – D100x140 S3	3.5" API Reg Box	3.5" API Reg Pin	36" (91.4 cm)	\$14,371
296341491	D36x50 – D100x140 S3	3.5" API Reg Box	3.5" API Reg Pin	38" (96.5 cm)	\$16,688
296341492	D36x50 – D100x140 S3	3.5" API Reg Box	3.5" API Reg Pin	40" (101.6 cm)	\$19,148
296264865	Replacement Rotary Teeth – Heavy-Duty Weld-On				\$12



T-Rex Reamer

Take a bite out of tough conditions. Ruggedly constructed with work-hardened, high-alloy steel, this reamer incorporates a unique, steep, rear-tapered design for ease of pushback when needed. Optional built-in swivel or through-shaft designs are available. High-wear areas are made with a resilient carbide mesh grit hardfacing. Equipped with oversized shark teeth tooling for aggressive, yet smooth, cutting action, the T-Rex reamer is ready for **cobble, chunk rock and soft rock**.



Shark teeth tooling for an aggressive, yet smooth, cutting action.

High-wear areas are coated with resilient carbide mesh grit hardfacing.

Reamer Carriers

PART NO.	MAX REAMER DIA.	MAX SHAFT LENGTH	MAX WEIGHT	PRICE USD
296255490	24" (61 cm)	40" (101.6 cm)	1000 lb (453.6 kg)	\$472
296260037	48" (121.9 cm)	108" (274.3 cm)	2400 lb (1088.6 kg)	\$983



T-Rex With Swivel

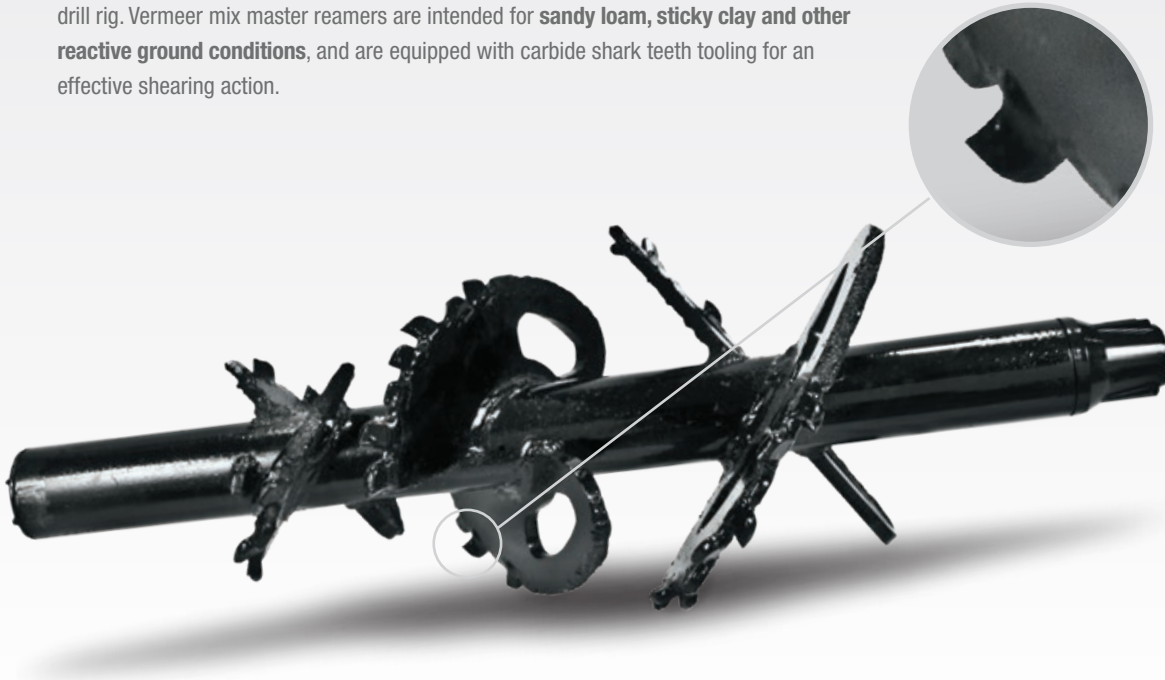
PART NO.	MODEL COMPATIBILITY	FRONT CONNECTION	REAR CONNECTION	CUTTING SIZE	SWIVEL/SWIVEL CAPACITY	PRICE USD
296309260	D36x50 – D60x90 S3	2.875" API Box	Swivel	8" (20.3 cm)	50,000 lb (22,679.6 kg)	\$3,013
296309261	D36x50 – D60x90 S3	2.875" API Box	Swivel	10" (25.4 cm)	50,000 lb (22,679.6 kg)	\$3,297
296309262	D36x50 – D60x90 S3	2.875" API Box	Swivel	12" (30.5 cm)	50,000 lb (22,679.6 kg)	\$3,847
296309263	D36x50 – D60x90 S3	2.875" API Box	Swivel	14" (35.6 cm)	50,000 lb (22,679.6 kg)	\$4,516
296309264	D36x50 – D60x90 S3	2.875" API Box	Swivel	16" (40.6 cm)	50,000 lb (22,679.6 kg)	\$5,003
296309265	D36x50 – D60x90 S3	2.875" API Box	Swivel	18" (45.7 cm)	50,000 lb (22,679.6 kg)	\$5,745
296309266	D36x50 – D60x90 S3	2.875" API Box	Swivel	20" (50.8 cm)	50,000 lb (22,679.6 kg)	\$6,801
296309267	D36x50 – D60x90 S3	2.875" API Box	Swivel	22" (55.9 cm)	50,000 lb (22,679.6 kg)	\$7,622
296309268	D36x50 – D60x90 S3	2.875" API Box	Swivel	24" (61 cm)	50,000 lb (22,679.6 kg)	\$8,200
296320016	D36x50 – D100x140 S3	3.5" API Reg Box	Swivel	12" (30.5 cm)	100,000 lb (45,359.2 kg)	\$5,028
296320018	D36x50 – D100x140 S3	3.5" API Reg Box	Swivel	14" (35.6 cm)	100,000 lb (45,359.2 kg)	\$5,628
296309286	D36x50 – D100x140 S3	3.5" API Reg Box	Swivel	16" (40.6 cm)	100,000 lb (45,359.2 kg)	\$6,165
296309287	D36x50 – D100x140 S3	3.5" API Reg Box	Swivel	18" (45.7 cm)	100,000 lb (45,359.2 kg)	\$6,746
296309288	D36x50 – D100x140 S3	3.5" API Reg Box	Swivel	20" (50.8 cm)	100,000 lb (45,359.2 kg)	\$7,526
296309289	D36x50 – D100x140 S3	3.5" API Reg Box	Swivel	22" (55.9 cm)	100,000 lb (45,359.2 kg)	\$8,826
296309290	D36x50 – D100x140 S3	3.5" API Reg Box	Swivel	24" (61 cm)	100,000 lb (45,359.2 kg)	\$9,687
296309291	D36x50 – D100x140 S3	3.5" API Reg Box	Swivel	26" (66 cm)	100,000 lb (45,359.2 kg)	\$11,017
296309292	D36x50 – D100x140 S3	3.5" API Reg Box	Swivel	28" (71.1 cm)	100,000 lb (45,359.2 kg)	\$12,140
296309293	D36x50 – D100x140 S3	3.5" API Reg Box	Swivel	30" (76.2 cm)	100,000 lb (45,359.2 kg)	\$13,145
296309294	D36x50 – D100x140 S3	3.5" API Reg Box	Swivel	32" (81.3 cm)	100,000 lb (45,359.2 kg)	\$15,700
296294440	Replacement Shark Teeth – 1.75" (4.4 cm) Weld-On					\$13

T-Rex Box X Pin

PART NO.	MODEL COMPATIBILITY	FRONT CONNECTION	REAR CONNECTION	CUTTING SIZE	PRICE USD
296309251	D16x20 – D60x90 S3	2.875" API Box	2.875" API Pin	8" (20.3 cm)	\$1,564
296309252	D16x20 – D60x90 S3	2.875" API Box	2.875" API Pin	10" (25.4 cm)	\$1,982
296309253	D16x20 – D60x90 S3	2.875" API Box	2.875" API Pin	12" (30.5 cm)	\$2,578
296309254	D16x20 – D60x90 S3	2.875" API Box	2.875" API Pin	14" (35.6 cm)	\$3,257
296309255	D16x20 – D60x90 S3	2.875" API Box	2.875" API Pin	16" (40.6 cm)	\$4,495
296309256	D16x20 – D60x90 S3	2.875" API Box	2.875" API Pin	18" (45.7 cm)	\$4,538
296309257	D16x20 – D60x90 S3	2.875" API Box	2.875" API Pin	20" (50.8 cm)	\$5,272
296309258	D16x20 – D60x90 S3	2.875" API Box	2.875" API Pin	22" (55.9 cm)	\$6,595
296309259	D16x20 – D60x90 S3	2.875" API Box	2.875" API Pin	24" (61 cm)	\$7,048
296320012	D36x50 – D100x140 S3	3.5" API Reg Box	3.5" API Reg Pin	12" (30.5 cm)	\$2,841
296320014	D36x50 – D100x140 S3	3.5" API Reg Box	3.5" API Reg Pin	14" (35.6 cm)	\$3,399
296309269	D36x50 – D100x140 S3	3.5" API Reg Box	3.5" API Reg Pin	16" (40.6 cm)	\$4,034
296309270	D36x50 – D100x140 S3	3.5" API Reg Box	3.5" API Reg Pin	18" (45.7 cm)	\$4,655
296309271	D36x50 – D100x140 S3	3.5" API Reg Box	3.5" API Reg Pin	20" (50.8 cm)	\$5,419
296309272	D36x50 – D100x140 S3	3.5" API Reg Box	3.5" API Reg Pin	22" (55.9 cm)	\$6,317
296309273	D36x50 – D100x140 S3	3.5" API Reg Box	3.5" API Reg Pin	24" (61 cm)	\$7,019
296309274	D36x50 – D100x140 S3	3.5" API Reg Box	3.5" API Reg Pin	26" (66.0 cm)	\$8,469
296309275	D36x50 – D100x140 S3	3.5" API Reg Box	3.5" API Reg Pin	28" (71.1 cm)	\$10,540
296309276	D36x50 – D100x140 S3	3.5" API Reg Box	3.5" API Reg Pin	30" (76.2 cm)	\$10,921
296309277	D36x50 – D100x140 S3	3.5" API Reg Box	3.5" API Reg Pin	32" (81.3 cm)	\$11,417
296294440	Replacement Shark Teeth – 1.75" (4.4 cm) Weld-On				\$13

Mix Master Reamer

Like the name says, this series puts together aggressive cutting and mixed design characteristics to help reduce the amount of pullback and rotational force needed from the drill rig. Vermeer mix master reamers are intended for **sandy loam, sticky clay and other reactive ground conditions**, and are equipped with carbide shark teeth tooling for an effective shearing action.

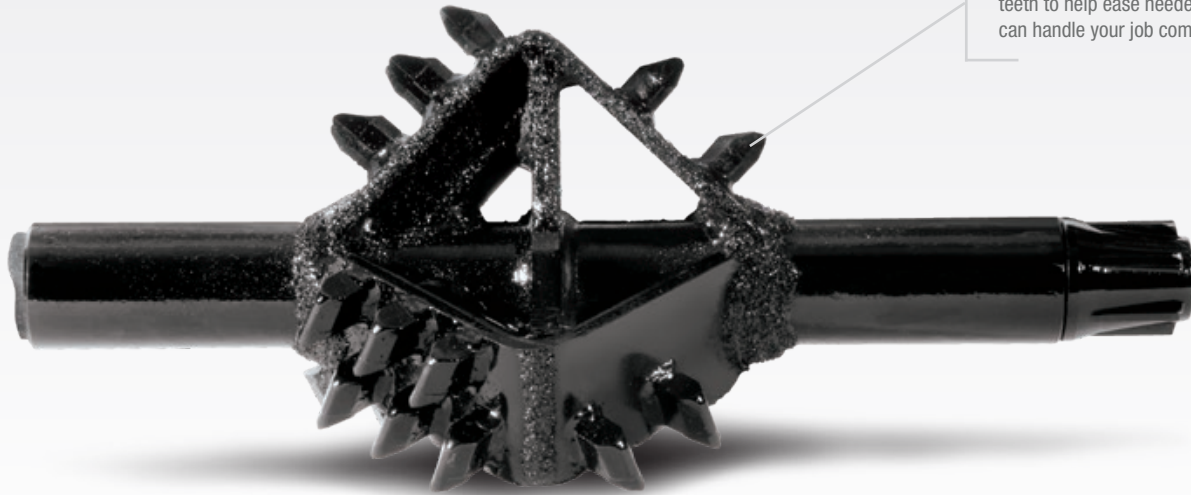


Equipped with carbide shark teeth tooling for shearing action.

PART NO.	MODEL COMPATIBILITY	FRONT CONNECTION	REAR CONNECTION	CUTTING SIZE	PRICE USD
296320135	D7x11 – D24x40 S3	2.375" API Reg Box	2.375" API Pin	6" (15.2 cm)	\$1,014
296320136	D7x11 – D24x40 S3	2.375" API Box	2.375" API Pin	8" (20.3 cm)	\$1,067
296320137	D7x11 – D24x40 S3	2.375" API Box	2.375" API Pin	10" (25.4 cm)	\$1,401
296320138	D7x11 – D24x40 S3	2.375" API Box	2.375" API Pin	12" (30.5 cm)	\$1,465
296320139	D7x11 – D24x40 S3	2.375" API Box	2.375" API Pin	14" (35.6 cm)	\$1,633
296320140	D7x11 – D24x40 S3	2.375" API Box	2.375" API Pin	16" (40.6 cm)	\$1,868
296320141	D16x20 – D80x100 Series II	2.875" API Box	2.875" API Pin	8" (20.3 cm)	\$1,265
296320142	D16x20 – D80x100 Series II	2.875" API Box	2.875" API Pin	10" (25.4 cm)	\$1,725
296320143	D16x20 – D80x100 Series II	2.875" API Box	2.875" API Pin	12" (30.5 cm)	\$1,871
296320144	D16x20 – D80x100 Series II	2.875" API Box	2.875" API Pin	14" (35.6 cm)	\$2,049
296320145	D16x20 – D80x100 Series II	2.875" API Box	2.875" API Pin	16" (40.6 cm)	\$2,248
296320146	D16x20 – D80x100 Series II	2.875" API Box	2.875" API Pin	18" (45.7 cm)	\$2,567
296320147	D16x20 – D80x100 Series II	2.875" API Box	2.875" API Pin	20" (50.8 cm)	\$3,050
296320148	D16x20 – D80x100 Series II	2.875" API Box	2.875" API Pin	22" (55.9 cm)	\$3,608
296320149	D16x20 – D80x100 Series II	2.875" API Box	2.875" API Pin	24" (61 cm)	\$3,864
296320150	D36x50 – D100x140 S3	3.5" API Reg Box	3.5" API Reg Pin	8" (20.3 cm)	\$1,668
296320151	D36x50 – D100x140 S3	3.5" API Reg Box	3.5" API Reg Pin	10" (25.4 cm)	\$1,966
296320152	D36x50 – D100x140 S3	3.5" API Reg Box	3.5" API Reg Pin	12" (30.5 cm)	\$2,102
296320153	D36x50 – D100x140 S3	3.5" API Reg Box	3.5" API Reg Pin	14" (35.6 cm)	\$2,295
296320154	D36x50 – D100x140 S3	3.5" API Reg Box	3.5" API Reg Pin	16" (40.6 cm)	\$2,509
296320155	D36x50 – D100x140 S3	3.5" API Reg Box	3.5" API Reg Pin	18" (45.7 cm)	\$3,132
296320156	D36x50 – D100x140 S3	3.5" API Reg Box	3.5" API Reg Pin	20" (50.8 cm)	\$3,712
296320157	D36x50 – D100x140 S3	3.5" API Reg Box	3.5" API Reg Pin	22" (55.9 cm)	\$4,000
296320158	D36x50 – D100x140 S3	3.5" API Reg Box	3.5" API Reg Pin	24" (61 cm)	\$4,116

Diamond Wing Cutter Reamer

Efficient and effective, the diamond wing cutter features a dual-tapered, open-bodied design to maintain mixing action which helps allow reduced pullback and rotational forces required from the drill rig.



Features front- and rear-facing shark teeth to help ease needed pushback and can handle your job coming and going.

PART NO.	MODEL COMPATIBILITY	FRONT CONNECTION	REAR CONNECTION	CUTTING SIZE	PRICE USD
296417717	D7x11 – D24x40 S3	2.375" API Reg Box	2.375" API Reg Pin	10" (25.4 cm)	\$1,333
296417708	D7x11 – D24x40 S3	2.375" API Reg Box	2.375" API Reg Pin	12" (30.5 cm)	\$1,454
296417699	D7x11 – D24x40 S3	2.375" API Reg Box	2.375" API Reg Pin	14" (35.6 cm)	\$1,725
296417690	D7x11 – D24x40 S3	2.375" API Reg Box	2.375" API Reg Pin	16" (40.6 cm)	\$1,876
296417726	D7x11 – D24x40 S3	2.375" API Reg Box	2.375" API Reg Pin	18" (45.7 cm)	\$2,060
296412817	D16x20 – D60x90 S3	2.875" API Reg Box	2.875" API Reg Pin	12" (30.5 cm)	\$1,631
296412818	D16x20 – D60x90 S3	2.875" API Reg Box	2.875" API Reg Pin	14" (35.6 cm)	\$1,829
296412819	D16x20 – D60x90 S3	2.875" API Reg Box	2.875" API Reg Pin	16" (40.6 cm)	\$2,086
296412820	D16x20 – D60x90 S3	2.875" API Reg Box	2.875" API Reg Pin	18" (45.7 cm)	\$2,163
296412821	D16x20 – D60x90 S3	2.875" API Reg Box	2.875" API Reg Pin	20" (50.8 cm)	\$2,483
296412822	D16x20 – D60x90 S3	2.875" API Reg Box	2.875" API Reg Pin	22" (55.9 cm)	\$2,666
296412823	D16x20 – D60x90 S3	2.875" API Reg Box	2.875" API Reg Pin	24" (61 cm)	\$2,783
296412826	D36x50 – D100x140 S3	3.5" API Reg Box	3.5" API Reg Pin	14" (35.6 cm)	\$2,222
296412827	D36x50 – D100x140 S3	3.5" API Reg Box	3.5" API Reg Pin	16" (40.6 cm)	\$2,485
296412828	D36x50 – D100x140 S3	3.5" API Reg Box	3.5" API Reg Pin	18" (45.7 cm)	\$2,656
296412829	D36x50 – D100x140 S3	3.5" API Reg Box	3.5" API Reg Pin	20" (50.8 cm)	\$2,959
296412830	D36x50 – D100x140 S3	3.5" API Reg Box	3.5" API Reg Pin	22" (55.9 cm)	\$3,299
296412831	D36x50 – D100x140 S3	3.5" API Reg Box	3.5" API Reg Pin	24" (61 cm)	\$3,439



Fly Cutter

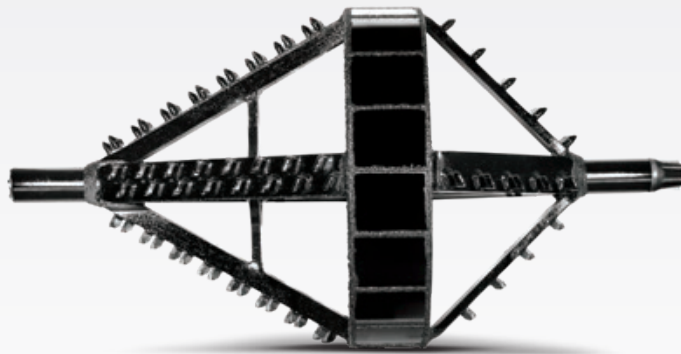
This robust flat-face reamer is designed for higher-powered HDD rigs. You can also count on the Vermeer fly cutter in a variety of ground conditions including **sandy soil, loam and soft, medium and hard soil**, with its changeable carbide fluid nozzles that help optimize flow (including front and rear fluid nozzles to help increase spoil displacement). Also designed with C20 pockets and replaceable C21HD rotary teeth to supply you with durable cutting performance.



Supreamer Reamer

Take on big jobs with the Supreamer reamer's exceptional mixing action — made possible by its open-bodied design and ruggedly large paddles.

Includes front- and rear-facing oversized carbide shark teeth tooling for aggressive cutting action and ease of pushback when needed.



Barrel Reamer

Vermeer barrel reamers give you steady bore hole stabilization in **sandy soil, loam, soft soil and medium soil**. They also include front and rear fluid nozzles to help increase spoil displacement. And they're designed with C20 pockets and replaceable C21HD rotary teeth to dish out durable cutting performance. Plus, you'll get heavy performance without hefty weight. In fact, they're designed with a unique internal baffle system that limits the amount of drilling fluid mass — decreasing overall tool weight to help protect structural integrity.



Helical Plus Reamer

This Vermeer-original design helps you tame **sandy loam and clay**. The secret to its success is a helical bar design with shark teeth tooling and rear-facing paddles. It all adds up for efficient cutting and mixing action.



DON'T SEE WHAT YOU NEED HERE?

Reamers are one of the most productive and popular options for HDD contractors. That's why Vermeer provides custom reamers for the full drill and maxi rig lineups. Looking for something you don't see here? Talk to your local Vermeer dealer to learn about our custom reamer build options or get additional product information at BORESTORE.com.

ADAPTERS AND PULLING EYES

Vermeer provides standard sub and adapter products to meet your immediate needs with proven Vermeer-specified heat-treated alloy steel that is finished off with a 100 percent thread inspection process. A full line of adapters and pulling eyes are available for small drills up to maxi drill rigs.



QuickFire system x API

The parts listed represent a small percentage — Vermeer can meet virtually all of your connectivity needs, including other manufacturers' thread profiles.



QuickFire system x Weldover



ADAPTERS		
PART NO.	DESCRIPTION	PRICE USD
262392001	1.625" LPT (P) x 2-4 ACME (P)	\$162
289400001	1.625" LPT (P) x 2.375" API Reg (P)	\$233
280086001	1.625" LPT (P) x 2.125" LPT (B)	\$453
227743001	1.625" LPT (P) x Weld-On	\$175
296364040	QuickFire system 300 (P) x 2-4 ACME (P)	\$262
296364041	QuickFire system 300 (P) x 2.375" API Reg (P)	\$262
296364054	QuickFire system 300 (P) x Weld-On	\$85
296364075	QuickFire system 300 (P) x Weld-On Spud	\$124
296364053	QuickFire system 300 (P) x 1.625" LPT (P) Weldover	\$85
296364055	QuickFire system 300 (P) x 2.125" LPT (P) Weldover	\$92
296279067	2.125" LPT (P) x 2.375" API Reg (P), 3" (7.6 cm) OD	\$259
296258005	2.125" LPT (P) x 2.375" API Reg (P), 3.25" (8.3 cm) OD	\$259
289403001	2.125" LPT (P) x 2.375" API Reg (P), 3.5" (8.9 cm) OD	\$259
289406001	2.125" LPT (P) x 2.875" API Reg (P)	\$388
296312604	2.125" LPT (P) x 3.5" API Reg (P)	\$414
227676001	2.125" LPT (P) x Weld-On	\$183
296344203	2.125" LPT (P) x 2.125" LPT (P) Weldover	\$642
296364095	QuickFire system 400 (P) x 2.125" LPT (B)	\$368
296364037	QuickFire system 400 (P) x 2.375" API Reg (P)	\$300
296364038	QuickFire system 400 (P) x 2.875" API Reg (P)	\$311
296364050	QuickFire system 400 (P) x Weld-On, 3" (7.6 cm) Long	\$149
296364073	QuickFire system 400 (P) x Weld-On, 3.75" (9.5 cm) Long	\$175
296364072	QuickFire system 400 (P) x 1.625" LPT (P) Weldover	\$164
296364052	QuickFire system 400 (P) x 2.125" LPT (P) Weldover	\$149
296364077	QuickFire system 460 (P) x 2.125" LPT Hex (B)	\$492
296364013	QuickFire system 460 (P) x 2.375" API Reg (P)	\$336
296364014	QuickFire system 460 (P) x 2.875" API Reg (P)	\$388
296364017	QuickFire system 460 (P) x 3.5" API Reg (P)	\$347
296364016	QuickFire system 460 (P) x Weld-On, 5.5" (14 cm) Long	\$177
296364074	QuickFire system 460 (P) x Weld-On, 6.75" (17.1 cm) Long	\$200
296364015	QuickFire system 460 (P) x 2.125" LPT (P) Weldover	\$235
296337363	2.875" FST #900 (B) x 2.875" API Reg (P)	\$388
289435001	2.875" FST #900 (B) x 3.5" API Reg (P)	\$689
296257929	3.5" FST #800 (B) x 2.875" API Reg (P)	\$362
296312589	3.5" FST #800 (B) x 3.5" API Reg (P)	\$414
296312587	3.5" FST #1000 (B) x 2.875" API Reg (P)	\$388
296312588	3.5" FST #1000 (B) x 3.5" API Reg (P)	\$414
296312585	3.5" FST #1000 (B) x 4.5" API IF (P)	\$776

PULLING EYES			
PART NO.	CONNECTION	RATING	PRICE USD
289443001	2.375" API Reg Box	10,000 lb (4535.9 kg)	\$260
289442001	2.375" API Reg Pin	10,000 lb (4535.9 kg)	\$260
289445001	2.375" API Reg Box	24,000 lb (10,886.2 kg)	\$362
296312688	2.375" API Reg Pin	24,000 lb (10,886.2 kg)	\$362
289447001	2.875" API Reg Box	24,000 lb (10,886.2 kg)	\$388
296312689	2.875" API Reg Pin	24,000 lb (10,886.2 kg)	\$388
289449001	2.875" API Reg Box	50,000 lb (22,679.6 kg)	\$466
296312692	2.875" API Reg Pin	50,000 lb (22,679.6 kg)	\$466
289451001	3.5" API Reg Box	50,000 lb (22,679.6 kg)	\$518
289450001	3.5" API Reg Pin	50,000 lb (22,679.6 kg)	\$518
296328327	2.875" API Reg Box	90,000 lb (40,823.3 kg)	\$642
289452001	2.875" API Reg Pin	90,000 lb (40,823.3 kg)	\$642
289455001	3.5" API Reg Box	90,000 lb (40,823.3 kg)	\$725
289454001	3.5" API Reg Pin	90,000 lb (40,823.3 kg)	\$725

VERMEER QUICKSHOT SWIVEL TOOLS

The new quickshot swivel tools give HDD crews dependable pullback performance on small-diameter bores. Quickshot swivel tools are designed to work in conjunction with most quickshot drill bits and are available in four sizes with ratings ranging from 9000 pounds to 30,000 pounds (4082.3 kg-13,607.8 kg). For optimized in-line pullback and to help prevent binding, Vermeer also offers a quick pullback swivel attachment plate.



PART NO.	3:1 SAFE WORKING LOAD	ULTIMATE LOAD	PRICE USD
296496479	9000 lb (4082.3 kg)	27,000 lb (12,247 kg)	\$373
296496480	12,000 (5443.1 kg)	36,000 lb (16,329.3 kg)	\$538
296500583	21,000 (9525.4 kg)	63,000 lb (28,576.3 kg)	\$663
296500584	30,000 (13,607.7 kg)	90,000 lb (40,823.3 kg)	\$766



QUICKSHOT SWIVEL SELECTED	PART NO.	DESCRIPTION	PRICE USD
9000 lb (4082.3 kg)	296529021	Pullback Plate for Vermeer 5 Bolt Bits	\$95
9000 lb (4082.3 kg)	296529129	Pullback Plate for Vermeer 6 Bolt Standard / Standard Hardfaced Bits	\$95
9000 lb (4082.3 kg)	296529012	Pullback Plate for Vermeer 6 Bolt Gladiator and Ace Bits	\$95
12,000 (5443.1 kg)	296529129	Pullback Plate for Vermeer 6 Bolt Standard / Standard Hardfaced Bits	\$95
12,000 (5443.1 kg)	296529012	Pullback Plate for Vermeer 6 Bolt Gladiator and Ace Bits	\$95
21,000 (9525.4 kg)	296529130	Pullback Plate for Vermeer 6 Bolt Standard / Standard Hardfaced Bits	\$95
21,000 (9525.4 kg)	296529016	Pullback Plate for Vermeer 6 Bolt Gladiator and Ace Bits	\$95
30,000 (13,607.7 kg)	296529131	Pullback Plate for Vermeer 6 Bolt Standard / Standard Hardfaced Bits	\$95
30,000 (13,607.7 kg)	296529018	Pullback Plate for Vermeer 6 Bolt Gladiator and Ace Bits	\$95

SWIVELS

Vermeer swivels give you important job flexibility that goes beyond the "nice-to-have." Choose from a full line of options, fitting small to large rigs. Available connections include hex collar, QuickFire connection system and API for ease of compatibility with a wide range of reamers and other tooling. Plus, count on our angular contact bearing design to handle thrust and radial load.



QuickFire Connection System

Designed for ease of use with the Vermeer QuickFire connection system.

PULLBACK SWIVEL – QUICKFIRE CONNECTION				
PART NO.	MODEL COMPATIBILITY	CONNECTION TYPE	CAPACITY	PRICE USD
296364127	D7x11A – D10x15 S3	QuickFire System 300 Pin	10,000 lb (4535.9 kg)	\$569
296364110	D7x11A – D10x15 S3	QuickFire System 300 Pin	24,000 lb (10,886.2 kg)	\$1,085
296364108	D16x20 – D24x40 S3	QuickFire System 400 Pin	24,000 lb (10,886.2 kg)	\$1,166
296364109	D16x20 – D24x40 S3	QuickFire System 460 Pin	24,000 lb (10,886.2 kg)	\$1,205
296364150	D36x50, D36x50 Series II, D40x55 S3	QuickFire System 460 Pin	40,000 lb (18,143.7 kg)	\$1,954



Hex

For use with the low-profile hex connection system.

PULLBACK SWIVEL – HEX				
PART NO.	MODEL COMPATIBILITY	CONNECTION TYPE	CAPACITY	PRICE USD
235086001	D7x11A – D10x15 S3	1.625" (4.1 cm) Hex Pin	7000 lb (3175.2 kg)	\$343
235039001	D16x20 – D24x40 S3	2.125" (5.4 cm) Hex Pin	24,000 lb (10,886.2 kg)	\$891
280486001	D24x40 – D40x55 S3	2.125" (5.4 cm) Hex Pin	40,000 lb (18,143.7 kg)	\$1,690



Double Eye

The double eye is a universal design that can be used with any reamer that doesn't include a built-in swivel.

PULLBACK SWIVEL – DOUBLE EYE				
PART NO.	MODEL COMPATIBILITY	CONNECTION TYPE	CAPACITY	PRICE USD
296448894	D7x11A – D10x15 S3	Recessed Bolt	7000 lb (3175.5 kg)	\$595
296448874	D16x20 – D20x22 S3	Recessed Bolt	10,000 lb (4535.9 kg)	\$647
296448829	D16x20 – D24x40 S3	Recessed Bolt	24,000 lb (10,886.2 kg)	\$792
296258123	D36x50, D36x50 Series II, D40x55 S3	Eye X Clevis	50,000 lb (22,679.6 kg)	\$2,029
296258124	D50x100 – D100x140 S3	Eye X Clevis	90,000 lb (40,823.3 kg)	\$2,669
296268977	D50x100 – D100x140 S3	Eye X Clevis	100,000 lb (45,359.2 kg)	\$3,600



API

Designed for use with API thread reamers.

PULLBACK SWIVEL – API				
PART NO.	MODEL COMPATIBILITY	CONNECTION TYPE	CAPACITY	PRICE USD
296364178	D7x11A – D10x15 S3	2.375" API Box	7000 lb (3175.5 kg)	\$633
296364177	D16x20 – D24x40 S3	2.375" API Box	24,000 lb (10,886.2 kg)	\$1,045
296364234	D24x40, D24x40 S3	2.875" API Box	24,000 lb (10,886.2 kg)	\$1,061
296364179	D36x50, D36x50 Series II, D40x55 S3	2.875" API Box	50,000 lb (22,679.6 kg)	\$2,033
296260235	D50x100 – D100x140 S3	3.5" API Box	100,000 lb (45,359.2 kg)	\$3,710



Plate Bit Swivel

Designed to be a quick and convenient solution — pulls on center and greases with replaceable bearing stack.

PLATE BIT SWIVEL				
PART NO.	MODEL COMPATIBILITY	CONNECTION TYPE	CAPACITY	PRICE USD
296406701	D7x11A – D10x15 S3	Cross Bolt	7000 lb (3175.2 kg)	\$440



Shackles

Used to attach end product to swivel.

SHACKLES			
PART NO.	DESCRIPTION	RATED CAPACITY	PRICE USD
296415190	3/8" (.375", 10 mm) Threaded (P)	2000 lb (907.2 kg)	\$3.43
296415191	7/16" (.348", 11 mm) Threaded (P)	3000 lb (1360.8 kg)	\$3.64
296415192	1/2" (.5", 13 mm) Threaded (P)	4000 lb (1814.4 kg)	\$6.28
296415193	5/8" (.625", 16 mm) Threaded (P)	6500 lb (2948.4 kg)	\$7.99
296415161	.88" (22 mm) Threaded (P)	13,000 lb (5896.7 kg)	\$10.25
296415390	1" (25 mm) Threaded (P)	17,000 lb (7711.1 kg)	\$20.46

PULLERS

Whether you're working with HDPE, PVC or PE, you'll find a full range of puller options to help meet your product pipe type and size.



Duct

You can get a grip on the job with our duct puller that features high thread engagement. It's durable, too, with heat-treated, high-alloy steel construction.

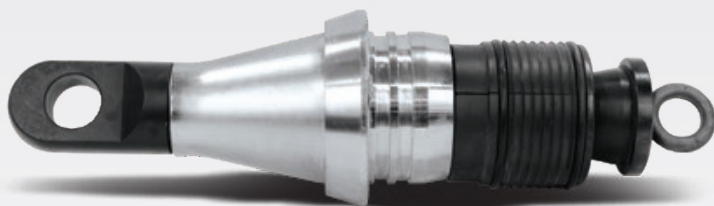
PART NO.	DESCRIPTION	SIZE	PRICE USD
231802001	Duct Puller	0.5" – 1" (1.3 cm – 2.5 cm)	\$57
296255297	Duct Puller	1" (2.5 cm)	\$54
289295001	Duct Puller	1" – 1.25" (2.5 cm – 3.2 cm)	\$71
296255533	Duct Puller	1.25" (3.2 cm)	\$62
231805001	Duct Puller	1.25" – 1.5" (3.2 cm – 3.8 cm)	\$75
296255298	Duct Puller	1.5" (3.8 cm)	\$69
231807001	Duct Puller	2" (5.1 cm)	\$82
296448883	Duct Puller	2.5" (6.35 cm)	\$181



Sleeved

With Vermeer sleeved pullers, a protective sleeve guards the leading edge of the installation product, reducing the possibility of contamination and helping to prevent accidental release from the puller.

PART NO.	DESCRIPTION	SIZE	PRICE USD
296401388	Sleeved Puller	1" (2.5 cm)	\$157
296401386	Sleeved Puller	1.25" (3.2 cm)	\$254
296401384	Sleeved Puller	1.5" (3.8 cm)	\$268
296401366	Sleeved Puller	2" (5.1 cm)	\$363
296401367	Sleeved Puller	2.5" (6.4 cm)	\$459
296341810	Sleeved Puller	3" (7.6 cm)	\$512
296341812	Sleeved Puller	4" (10.2 cm)	\$567
296404503	Sleeved Puller	6" (15.2 cm)	\$959
296448980	Sleeved Puller	8" (20.32 cm)	\$1,579
296449000	Sleeved Puller	10" (25.4 cm)	\$2,588



Expanded Tapered

As the leading edge of the installation product makes its way, it's guarded by a protective sleeve that reduces the possibility of contamination and helps prevent accidental release from the puller. An advanced taperlock design helps prevent accidental unscrewing of the puller during installation or removal of pipe.

PART NO.	DESCRIPTION	SIZE	PRICE USD
296401387	Expanding Taper Puller	1" (2.5 cm)	\$173
296401385	Expanding Taper Puller	1.25" (3.2 cm)	\$202
296401383	Expanding Taper Puller	1.5" (3.8 cm)	\$257
296401368	Expanding Taper Puller	2" (5.1 cm)	\$283
296401369	Expanding Taper Puller	2.5" (6.4 cm)	\$349
296341809	Expanding Taper Puller	3" (7.6 cm)	\$355
296341811	Expanding Taper Puller	4" (10.2 cm)	\$478
296404501	Expanding Taper Puller	5" (12.7 cm)	\$757
296404502	Expanding Taper Puller	6" (15.2 cm)	\$803
296404516	Expanding Taper Puller	8" (20.3 cm)	\$1,238
296404517	Expanding Taper Puller	10" (25.4 cm)	\$1,841
296404518	Expanding Taper Puller	12" (30.5 cm)	\$2,206

Vermeer heavy-duty pulling grips feature a shouldered, double-weave, no-crimp design.

Pulling Grips

Help meet your job's need. Available in double- and triple-galvanized wire weave.

PART NO.	DESCRIPTION	SIZE	PRICE USD
204965001	Pulling Grips	0.75" – 1.25" (1.9 cm – 3.2 cm)	\$34
296278316	Pulling Grips	0.75" – 1.25" (1.9 cm – 3.2 cm)	\$60
204966001	Pulling Grips	1.25" – 2" (3.2 cm – 5.1 cm)	\$69
204967001	Pulling Grips	2" – 2.75" (5.1 cm – 7 cm)	\$80
204968001	Pulling Grips	2.75" – 3.5" (7 cm – 8.9 cm)	\$116
204969001	Pulling Grips	3.5" – 4.25" (8.9 cm – 10.8 cm)	\$123
223750001	Pulling Grips	4.25" – 4.875" (10.8 cm – 12.4 cm)	\$148



MAKING THE CONNECTION.

Whether making-up or breaking-out tooling, Vermeer has the right breakout device for your needs.

Vermeer now offers a 21,500 foot pound (29,150 Nm) portable hydraulic breakout device that includes forged alloy wrenches, two sets of dies, hydraulic cylinder and a 28-volt hydraulic power unit with two Milwaukee lithium batteries (includes charger). The system's wide grip range is compatible with tooling ranging from 2.5 inch-5.75 inch (6.3 cm-14.6 cm) in diameter tooling. Specialty bit breaker wrench arms are available for use with PDC and tricone rock bits.

For smaller tooling applications, there is the Vermeer PDD11500 breakout tongs that can handle tooling ranging from 1.66 inch-3.50 inch (4.2 cm-8.9 cm) in diameter and delivers up to 11,500 ft-lb (15,592 Nm) of torque.



PART NO.	DESCRIPTION	PRICE USD
PBD21500	21,500 ft-lb (29,150 Nm) Portable Breakout Device	\$13,031
296522914	2.5" - 3.75" (6.3 - 9.5 cm) Die Set (8 required)	\$63
296539594	2.875" API Reg Flat Bit Breaker (4 required)	\$163
296539592	3.5" API Reg Flat Bit Breaker (4 required)	\$163
296522949	5 - 5.75" (12.7 - 14.6 cm) Dia. Tricone Bit Breaker	\$362
296522909	5.75 - 6.5" (14.6 - 16.5 cm) Dia. Tricone Bit Breaker	\$362
296539505	6.5 - 7.25" (16.5 - 18.4 cm) Dia. Tricone Bit Breaker	\$362

For more information on the product and how to purchase, contact your local Vermeer dealer.

PART NO.	DESCRIPTION	PRICE USD
PBD11500	11,500 ft-lb (15,591 Nm) Portable Breakout Device	\$1,683

Thread Lube

Find thread lubes specially designed for seasonal applications and various HDD models, including the environmentally friendly Bio-Stick grease.

PART NO.	DESCRIPTION	VOLUME	PRICE USD
296337339	Bio-Stick Grease	1 gal (3.8 L)	\$42
296337340	Bio-Stick Grease	2 gal (7.6 L)	\$80
296426100	Bio-Stick Grease	5 gal (18.9 L)	\$211
296337372	Bio-Stick Grease	30-pk cartridge	\$238
235983001	Vermeer Thread Lube	1 gal (3.8 L)	\$37
235983002	Vermeer Thread Lube – Winter	1 gal (3.8 L)	\$37
296408629	Vermeer Thread Lube – Winter	5 gal (18.9 L)	\$196
905508003	Vermeer Thread Lube – Summer	2 gal (7.6 L)	\$80
296426101	Vermeer Thread Lube – Summer	5 gal (18.9 L)	\$182



Bio-Stick grease is biodegradable, nontoxic and washable, making it an environmentally friendly solution to your thread lube needs.



Thread Lube Brushes

Get ready for the work ahead. A Vermeer long-handle brush makes manual thread lube application quick and convenient.

PART NO.	DESCRIPTION	PRICE USD
296264990	Thread Lube Brush – Tapered	\$19
296264991	Thread Lube Brush – Beveled	\$16
296274856	Thread Lube Brush – Long Tapered	\$26



BORESTORE[®]

HDD TOOLING AND ACCESSORIES WAREHOUSE

